

Notes V10 Upgrades

Alles was man wissen muss!

Christoph Adler - panagenda

Christoph Adler - Senior Consultant at panagenda



17+ years of IBM (Lotus) solutions experience

Focused on

- IBM Notes Client Management
- Analysis and Optimization of ICS infrastructures
- Cloud onboarding
- Application Modernization

Good to know

- From Germany 🇩🇪
- Frequent traveler ✈️
- Geek 🧐
- Don't give energy drinks → squirrel mode 🐿️

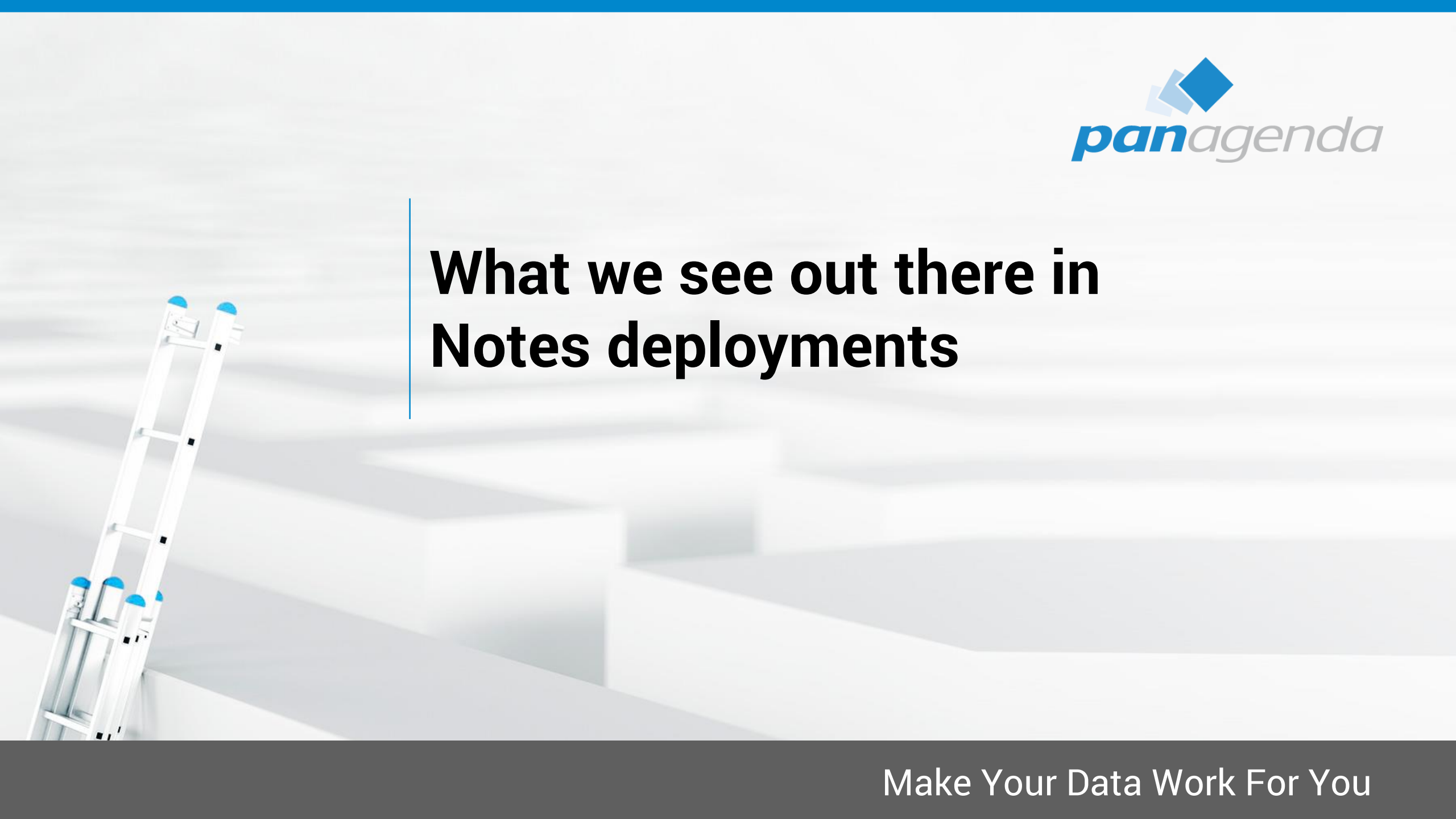
IBM CHAMPION 



Agenda

1. What we see out there in Notes deployments
2. Know your current environment
3. Define target (version and more ...)
4. Choose Upgrade/Deployment Tool
5. Create Upgrade Package
6. Define post Upgrade actions
7. Test, pilot, production
8. Summary





**What we see out there in
Notes deployments**

What we see out there in Notes deployments

- Lack of visibility and control
- Many different versions and many different installation types
- Uncontrolled configurations (Data Dirs, Locations, Connections, Accounts, Settings, Eclipse preferences, ...)
- Not secure (JVM vulnerabilities, Code Signers, ECL Management)
- Mixed functionality – things don't work!
- The same end-user problems occur again and again (and again)

What we see out there in Notes deployments (2)

- Reluctance to upgrade
- Software deployment teams have little/no knowledge or “care factor” about Notes
- Administrators lack time and skill to utilize all available tools to effectively manage the Notes client
- Perception => it's too difficult and/or expensive / too risky for the business due to disruptions



Know your current environment

Know your current environment

- It's fundamentally important that you know the details about your current Notes Client Infrastructure to be able to make smart decisions for future deployments
 - Which exact versions are deployed?
 - Which Installation types and modes are used?
 - Locations of Program-, Data and SharedData-Dir?
 - Usage of Laptops, Desktops, Citrix and VDI in numbers/percentage?
 - Which OS incl. version is used?
 - Usage of Notes addons Connections plugins, SwiftFile, CTI, ... ?
- If you can't answer the questions above 100% correctly, the following two slides will help you a lot!

MarvelClient Essentials – included in IBM Notes/Domino 10.0.1



- Makes it easier, faster and cheaper to upgrade to IBM Notes 10.x
 - Provides valuable insights into Notes client landscapes for Notes 9.x and beyond
 - Helps reduce helpdesk tickets, support, client maintenance and upgrade efforts
 - Runs on all Notes client platforms supported by IBM (Intel Mac 64 bit, Windows, Citrix and VDI)
 - Runs on all IBM Domino platforms supported by IBM
 - Best of all: **it's FREE and included in IBM Notes and Domino 10.0.1**
- If you are not on IBM Notes and/or Domino 10.0.1 now, you can get MarvelClient Essentials here:
<https://www.panagenda.com/essentials/>



More information:

https://www.ibm.com/support/knowledgecenter/en/SSKTMJ_10.0.1/admin/wn_marvelclient_essentials.html
<https://www-01.ibm.com/support/docview.wss?uid=ibm10737079>
<https://www-01.ibm.com/support/docview.wss?uid=ibm10737079&aid=1>

MarvelClient Essentials – AnalyzeDB examples

113	14%	[-] Windows 64 Bit
1	1%	[+] Windows 10 Home, 64-bit (build 17134)
1	1%	[+] Windows 10 Professional, 64-bit (build 14393)
1	1%	[+] Windows 10 Professional, 64-bit (build 15063)
1	1%	[+] Windows 10 Professional, 64-bit (build 16299)
12	11%	[+] Windows 10 Professional, 64-bit (build 17134)
32	28%	[+] Windows 7 Enterprise Edition, 64-bit Service Pack 1 (build 7601)
44	39%	[+] Windows 7 Professional, 64-bit Service Pack 1 (build 7601)
2	2%	[+] Windows 7 Professional, 64-bit (build 7600)
5	4%	[+] Windows 7 Ultimate Edition, 64-bit Service Pack 1 (build 7601)
1	1%	[+] Windows 7 Ultimate Edition, 64-bit (build 7600)
4	4%	[+] Windows 8 Professional, 64-bit (build 9200)
9	8%	[+] Windows 8.1 Professional, 64-bit (build 9600)

MarvelClient Essentials – AnalyzeDB examples (2)

183	13%	[-] Notes - Basic vs. Standard vs. IBM Client Application Access
179	98%	[+] Standard installed and running Standard client
2	1%	[+] Standard installed but running Basic client
2	1%	[+] < Notes 8
183	13%	[-] Notes - Components
19	10%	[+] Notes Client
164	90%	[+] Notes Client + Admin Client + Designer Client
181	13%	[-] Notes - Releases
37	20%	[+] 8
144	80%	[+] 9
183	13%	[+] Notes - Single- vs. Multiuser
183	13%	[+] Notes BrowserPlugin

MarvelClient Essentials – AnalyzeDB examples (3)

177	13%	<input type="checkbox"/> Notes - Single- vs. Multiuser
11	6%	<input type="checkbox"/> Multiuser with SharedDataDirectory
166	94%	<input type="checkbox"/> Singleuser

MarvelClient Essentials – AnalyzeDB examples (4)

175	13%	Notes - Releases
37	21%	8
5	14%	Release 8.5.1
4	11%	Release 8.5.2
3	8%	Release 8.5.2FP2
2	5%	Release 8.5.2FP3
15	41%	Release 8.5.3
3	8%	Release 8.5.3FP1
1	3%	Release 8.5.3FP2
1	3%	Release 8.5.3FP3
3	8%	Release 8.5.3FP6 SHF577
138	79%	9
22	16%	Release 9.0
1	1%	Release 9.0 SHF316
21	15%	Release 9.0.1
2	1%	Release 9.0.1FP1
3	2%	Release 9.0.1FP10
1	1%	Release 9.0.1FP10 SHF68
9	7%	Release 9.0.1FP2
3	2%	Release 9.0.1FP2 SHF63
1	1%	Release 9.0.1FP3
5	4%	Release 9.0.1FP3 SHF109
1	1%	Release 9.0.1FP3 SHF227
1	1%	Release 9.0.1FP3 SHF255
15	11%	Release 9.0.1FP4
4	3%	Release 9.0.1FP5 SHF106
14	10%	Release 9.0.1FP6
18	13%	Release 9.0.1FP7
1	1%	Release 9.0.1FP7 SHF155
1	1%	Release 9.0.1FP8
3	2%	Release 9.0.1FP8 SHF216
8	6%	Release 9.0.1FP9
4	3%	Release 9.0.1FP9 SHF55

Define target (version and more ...)

Define target (version and more ...)

- Version is very easy at the moment → 10.0.1 FP1
 - Feature Pack 1 is planned for Q1 2019 (Status: Gold Candidate)
[http://www-10.lotus.com/ldd/fixlist.nsf/\(Progress\)/10.0.1%20FP1](http://www-10.lotus.com/ldd/fixlist.nsf/(Progress)/10.0.1%20FP1)
 - Notes 11 will be shipped in Q4 2019 / Q1 2020
- Which Client Package?
 - Standard, Basic and/or ICAA (IBM Client Application Access)
- Which Installation type?
 - Single or **MultiUser**

Define target (version and more ...) (2)

- Adding languages using MUI-Pack installation(s)
 - Multilingual User Interface
 - Group1, 2a, 2b and 3 → Group1 was finally released on 5th Feb 2019 – but ☹️
 - <https://www-01.ibm.com/support/docview.wss?uid=ibm10870434>
 - Group1 is expected to be released (together with FP1) soon
 - eGA - end of the month March 2019 → this week
- Current status for languages
 - Group 1 – Phase 1 (Standard)
 - Group 1 – Phase 2 (ICAA and Basic)
 - Group 2 languages (later → ~ same eGA as FP2)

Notes/Domino v11 Language Kits

- Re-engineering language kit generation process
- Selected language kits will be available for betas
- Simultaneous ship language kits with Domino v11
- Ship language kit fix packs as necessary

Define target (version and more ...) (3)

- Where to deploy?
 - Laptops, Desktops, Citrix and/or VDI
 - Windows7, Windows10, macOS 10.13 and/or macOS 10.14
- <https://www-01.ibm.com/support/docview.wss?uid=ibm10737113>

Define target (version and more ...) (3)

- Adding other functions/packages?
 - Sametime embedded → not needed, 10.0.1 is up-to-date
 - JVMPatch → not needed, 10.0.1 is up-to-date
 - SwiftFile → use latest version 4.2.1 here
<http://www-01.ibm.com/support/docview.wss?uid=swg24035896>
 - IBM Connections Plugins for Notes → use latest version 5.5.0.20180813-1729 here
<https://xspy.mybluemix.net/nx>
 - Programs/Applications who interacts/communicates with Notes
 - CTI, Instant Messengers, ...

Define target (version and more ...) (4)

- Let's assume (for this session) you want to Upgrade from Notes 9.0.1 FPx IFx to the following components:
 - IBM Notes 10.0.1 Standard Client → MultiUser Installation on Windows10 64Bit
 - Add French and Japanese (Multilingual User Interface = MUI)
 - SwiftFile 4.2.1
 - Connections Plugins for Notes 5.5.0.20180813-1729
 - Use of default paths for
 - Program directory**
C:\Program Files(x86)\IBM\Notes
 - Shared data directory**
C:\ProgramData\IBM\Notes\Data\shared
 - Data directory**
C:\Users\<USERNAME>\AppData\Local\IBM\Notes\Data

Choose Upgrade/Deployment Tool

Choose Upgrade/Deployment Tool – Notes Smart Upgrade

For many many reasons

I “personally” do not recommend to use “Notes Smart Upgrade”

Choose Upgrade/Deployment Tool – Third-Party-Solutions

- Third-Party-Solution for Notes
- Third-Party-Solutions for Windows, like SCCM, Empirum, LanDesk or others

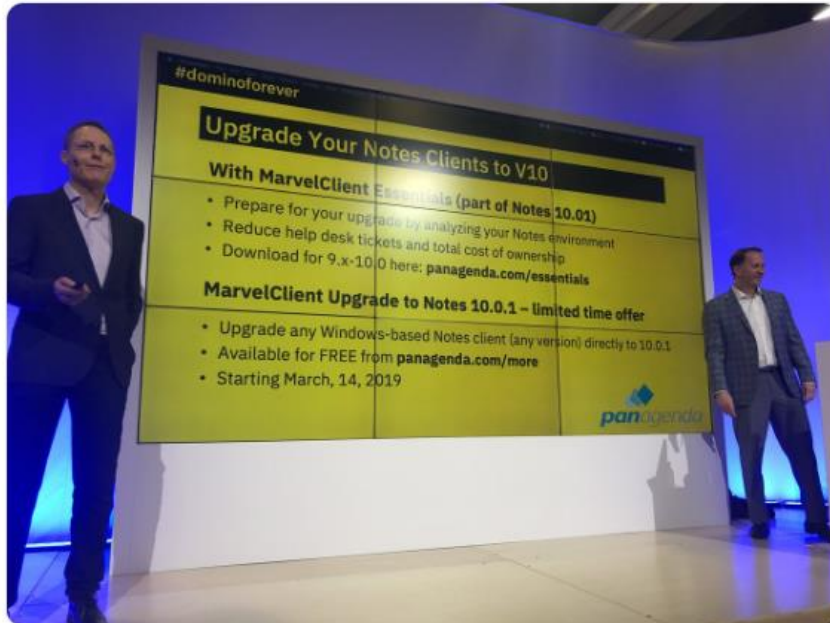
Marvel Client Upgrade Free



danielle baptiste
@social_baptiste

Following

Happy Valentine's Day! ❤️ Our fabulous partner @panagenda gives the gift of the #MarvelClient to help you get to Domino10 faster #DominoForever #IBMThink2019 #LetsConnect



5:37 PM - 14 Feb 2019 from San Francisco, CA

#dominoforever

IBM

Notes 10.0.1 - Take Control of Your Notes Clients

MarvelClient Essentials

- Prepare upgrades and analyze your Notes environment
- Reduce help desk tickets and total cost of ownership
- Included as part of Notes and Domino beginning with 10.0.1
- Download for 9.x-10.0 here: panagenda.com/essentials

MarvelClient Upgrade to Notes 10.0.1

- Smartly upgrade any Windows Notes client directly to 10.0.1
- Available for FREE from panagenda.com/more

www.panagenda.com/free-upgrade

Marvel Client Upgrade Free (2)

Dienstag 26 März					Stand 22. März
working					1
angular 7	Track 2 Session E35 A15 Domino Security in a Mixed-Use World - Andrew Pollack	Track 3 Session A25 Domino App Server Koexistenz mit Microsoft o365 - Andreas Sauer	Track 4 Session E25 DEAN + NERD - Stacks für Domino Web Anw. - Thomas Bahn	Hands-On 5 Domino und Docker - Mathias Bierl	1
working					
nd SON -	Track 2 Session A36 V10 server resiliency + NSF limitations gone - Gary Rheame	Track 3 Session A16 E36 Legacy vs Hipster - Pantelis Botsas	Track 4 Session A26 E26 MarvelClient Upgrade Free Edition - Christoph Adler	Hands-On 6 Node.js und Domino - Lars Migula	
orking		SpeedSponsoring		SpeedSporting	
mit den Referenten, Verlosung & Speed-demo-ing					

A football player in a white jersey with blue accents and a white helmet is shown from the side, reaching up to catch a football. The background is a stadium with bright lights and a cloudy sky. A thin blue vertical line is positioned to the left of the main text.

Create Upgrade Package

Make Your Data Work For You

Create Upgrade Package

- No need to make changes to MSI package(s)
 - Scripts can help here
 - Differentiation between package and configuration (notes.ini, ConfigFile, etc.)
 - That will help you a lot when it comes to package changes, new versions and testing
- Always include an Uninstall part in your package
 - In-place upgrades **are not recommended**
 - You can use the package also in cases of a new or re-install

Create Upgrade Package (2)

Installation order

- a) Uninstall current version
 - Using NICE (Notes Install Cleanup Executable)
<https://www-01.ibm.com/support/docview.wss?uid=swg21459714>
- b) Run local cleanup
 - Remove old Program- and SharedData-Dir
- c) Install IBM Notes 10.0.1
- d) Add French and Japanese languages (Multilingual User Interface = MUI)
- e) Install SwiftFile 4.2.1
- f) Install Connections Plugins for Notes 5.5.0.20180813-1729
- g) Copy customized files like stub notes.ini, ConfigFile, etc.

Create Upgrade Package (3)

- Command lines for silent Uninstall and Cleanup

```
"c:\Install\NICE\nice.exe" -rp -qn -wipe"
rmdir "c:\Program Files (x86)\IBM\Notes" /s/q"
rmdir "c:\Program Files (x86)\IBM\SwiftFile" /s/q"
rmdir "c:\ProgramData\IBM\JVMPatcher" /s/q"
rmdir "c:\ProgramData\IBM\Notes" /s/q"
rmdir "c:\ProgramData\Lotus" /s/q"
```

- Command lines for silent Install/Upgrade

```
"c:\temp\Install\Notes_10.0.1\NOTES_V10.0.1_FOR_WIN_EN.exe" -s -a /s /v"SETMULTIUSER=1 /qn /lime "c:\temp\Install\Logs\NOTES_V10.0.1_FOR_WIN_EN.log""
"c:\temp\Install\MUI-GP1\NOTES_CLIENT_10.0.1_ML_UI_WIN_GP_1.exe" -s -a /s /v"ADDLOCAL=French,Japanese /qn /lime "c:\temp\Install\Logs\NOTES_CLIENT_10.0.1_ML_UI_WIN_GP_1.log""
"c:\temp\Install\SwiftFile_4.2.1\CIQ83EN.exe" /s /v"/qn /lime "c:\temp\Install\Logs\CIQ83EN.log""
"c:\temp\Install\CNXPluginsNotes_5.5.0.20180813-1729\setup.exe" /s /v"/qn /lime "c:\temp\Install\Logs\CNXPluginsNotes_5.5.0.20180813-1729.log""
```

- Command lines to copy customized stub notes.ini & ConfigFile

```
copy /Y "c:\temp\Install\customized_files\notes.ini" "c:\ProgramData\IBM\Notes\Data\notes.ini""
copy /Y "c:\temp\Install\customized_files\config.txt" "c:\ProgramData\IBM\Notes\Data\config.txt""
```


Create Upgrade Package (4)

- Check the log files (created during installation) for errors for all installed components

- Successful

```
MSI (s) (CC:54) [19:19:53:638]: Product: IBM Notes 10.0.1 -- Installation operation completed successfully.  
MSI (s) (CC:54) [19:19:53:638]: Windows Installer installed the product. Product Name: IBM Notes 10.0.1.  
Product Version: 10.01.18332. Product Language: 1033. Manufacturer: IBM. Installation success or error status: 0.  
=== Logging stopped: 2/3/2019 19:19:53 ===
```

- Not successful (with errors) – new installation needed after Windows restart (complete package)

```
MSI (s) (CC:54) [21:29:46:536]: Product: IBM Notes 10.0.1 -- Installation operation failed.  
MSI (s) (CC:54) [21:29:46:536]: Windows Installer installed the product. Product Name: IBM Notes 10.0.1.  
Product Version: 10.01.18332. Product Language: 1033. Manufacturer: IBM. Installation success or error status: 1603.  
=== Logging stopped: 2/3/2019 21:29:46 ===
```

Create Upgrade Package (5)

- Additional Information
 - For an installation on Citrix, please check out this slideshare:
 - <https://www.slideshare.net/christophadler50/panagenda-webinar-virtual-faster-better-how-to-virtualize-ibm-notesv10>
 - If you need/want to switch from Single to MultiUser
 - Check out the MUMA Tool (Multi-User Migration Assistant) – must be done before Upgrade to Notes 10.0.1
 - <https://www-01.ibm.com/support/docview.wss?uid=swg21459627>
 - A specific Third-Party solution can help here during Upgrade process – also if you want to migrate the DataDir from NetworkDrive to default local

Create Upgrade Package (6)

- Additional Information
 - Customized stub notes.ini (example)

```
[Notes]
KitType=1
SharedDataDirectory=c:\ProgramData\IBM\Notes\Data\Shared
InstallType=6
InstallMode=1
NotesProgram=c:\Program Files (x86)\IBM\Notes\
ConfigFile=c:\ProgramData\IBM\Notes\Data\config.txt
CREATE_R10_DATABASES=1
V10_WORKSPACE_BACKGROUND_MODE=1
```

- config.txt (example)

```
Username=%USERNAME%
Domino.Name=Server/Certifier
Domino.Address=Server.hostname.local
Domino.Port=TCPIP
Domino.Server=1
AdditionalServices=-1
```



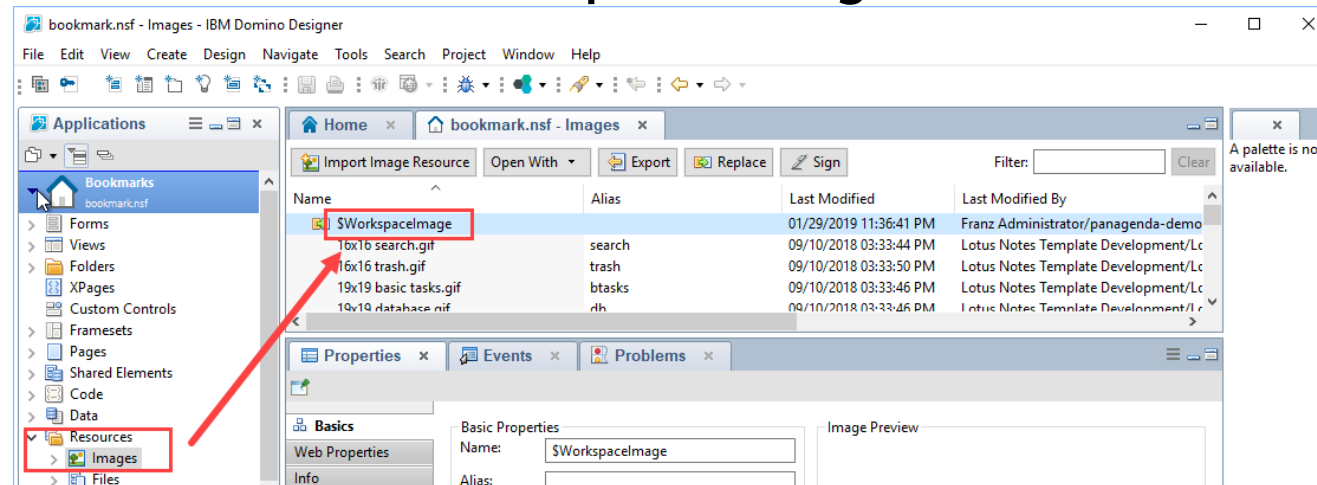

Define post Upgrade actions

Define post Upgrade actions

- notes.ini changes for existing configurations (via MarvelClient Essentials or Policy)
 - Remove CREATE_R85_DATABASES=1
 - Remove CREATE_R9_DATABASES=1
 - Add CREATE_R10_DATABASES=1
 - Add NSF_UpdateODS=1
 - Add V10_WORKSPACE_BACKGROUND_MODE=1 → see next slide

IBM Notes 10.x – Workspace

- This will be controlled by a notes.ini parameter:
V10_WORKSPACE_BACKGROUND_MODE=0 → default (blue)
V10_WORKSPACE_BACKGROUND_MODE=1 → classic (grey lines)
V10_WORKSPACE_BACKGROUND_MODE=2 → customized
- If you choose for “2”, make sure you have an image resource in your local bookmark.nsf named “\$WorkspaceImage”



A photograph of a football player in a white jersey with blue accents and a white helmet, seen from the side, reaching up to catch a football. The background shows a stadium with tall light towers under a cloudy sky. A thin blue vertical line is positioned to the left of the text.

Test, pilot, production

Test, pilot, production

- Test
 - Try to use virtual machines with snapshots
 - Use images, which is very close to your production configuration
 - Desktops vs. Laptops vs. VDI
 - ActiveDirectory → GPOs (Group Policy Objects)
 - No local admin user rights
 - Enabled UAC (User Account Control)
 - Installed AV (Anti-Virus) Software

Test, pilot, production (2)

- Pilot
 - Choose the members of the pilot group wisely and let them know
 - 20 – 50 users from different departments and with different requirements on IBM Notes
- Production Deployment
 - Inform your ServiceDesk and your users before you push the button
 - Balance your deployment by upgrading e. g. 100-500 users at the same time – no more



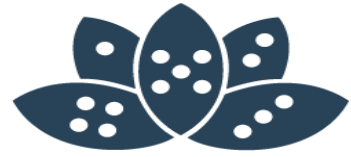
Summary

Summary

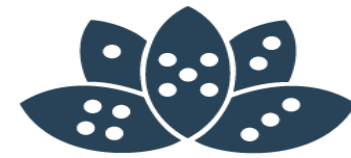
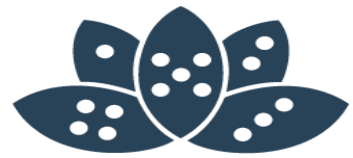
- You know your current environment
- You have a clear destination platform
- You have chosen your method and tools for the upgrade
- You have created your upgrade package(s)
- You have defined your settings on the new Notes platform
- You are ready to test, pilot, and roll out !



Q & A



Feedback please!



Vielen Dank !



Headquarters, Austria:

panagenda GmbH (Ltd.)

Schreyvogelgasse 3/10
AT 1010 Vienna

Phone: +43 1 89 012 89

Fax: +43 1 89 012 89-15

E-Mail: info@panagenda.com

USA:

panagenda Inc.

60 State Street, Suite 700
MA 02109 Boston

Phone: +1 617 855 5961

Fax: +1 617 488 2292

E-Mail: info@panagenda.com

Headquarters, Germany:

panagenda GmbH (Ltd.)

Lahnstraße 17
DE 64646 Heppenheim

Phone: +49 6252 67 939-00

Fax: +49 6252 67 939-16

E-Mail: info@panagenda.com

Germany:

panagenda Consulting GmbH (Ltd.)

Donnersbergstrasse 1
DE 64646 Heppenheim

Phone: +49 6252 67 939-86

Fax: +49 6252 67 939-16

E-Mail: info@panagenda.com

The Netherlands:

Trust Factory B.V.

11th Floor,
Koningin Julianaplein 10
NL 2595 AA The Hague

Phone: +31 70 80 801 96

E-Mail: info@trust-factory.com

Make Your Data Work for You