



Entwicklercamp 2012

# XPages – Extension Library

## Viagra für die XPage

26. – 28..03.2012

Maritim Hotel, Gelsenkirchen

Ulrich Krause, is@web, industrial services AG



## About: Ulrich Krause

- Lotus Notes / Domino Administrator & Entwickler since 1993
- Business Application Developer **is@web**, Nürnberg / Ratingen
- OpenNTF <http://openntf.org>
  - !!HELP!!, Cebulon, Trigger Happy
  - XPages Custom Controls
- IBM Champion 2011/2012
  - [https://www-304.ibm.com/connections/blogs/socialbusiness/entry/announcing\\_the\\_2011\\_ibm\\_champions\\_for\\_collaboration\\_solutions4?lang=de](https://www-304.ibm.com/connections/blogs/socialbusiness/entry/announcing_the_2011_ibm_champions_for_collaboration_solutions4?lang=de)
- Blog <http://www.eknori.de>
- Notes Forum (<http://www.atnotes.de>)





# Agenda

- JavaScript/CSS Aggregation
- Pre-Load for Xpages
- JAVA / JAR Design Element
- Themes
- XPages Extension Library / Upgrade Pack
- XPages Relational Database Support
- Resources, Books of Interest



# JavaScript/CSS Aggregation

- Aggregates multiple Dojo modules, or multiple CSSs into a single file
  - a decrease in requests sent from the browser to the server
  - an increase in user performance, particularly in the context of networks with high latency
  - an increase in the speed of JS/CSS parsing from the browser
  - the freeing up of server connections to fulfill other requests

On Sever: xsp.properties:  
*xsp.resources.aggregate=true*



# JavaScript/CSS Aggregation

First Name	Last Name	City
John	Doe	Gotham City
Ulrich	Krause	Mettmann
Peter	Pan	Neverland

The image shows two instances of a web browser's developer console. The top console displays a list of HTTP requests, including several GET requests to various Dojo and XSP endpoints. The bottom console shows a similar list, but with a red arrow pointing from the 'Profile (711.985ms, 8850 calls)' entry in the top console to the 'Profile (226.165ms, 8838 calls)' entry in the bottom console. The bottom console also shows a table of data, which is a duplicate of the one shown in the top console.

First Name	Last Name	City
John	Doe	Gotham City
Ulrich	Krause	Mettmann
Peter	Pan	Neverland



# Enable Pre-Load for XPages

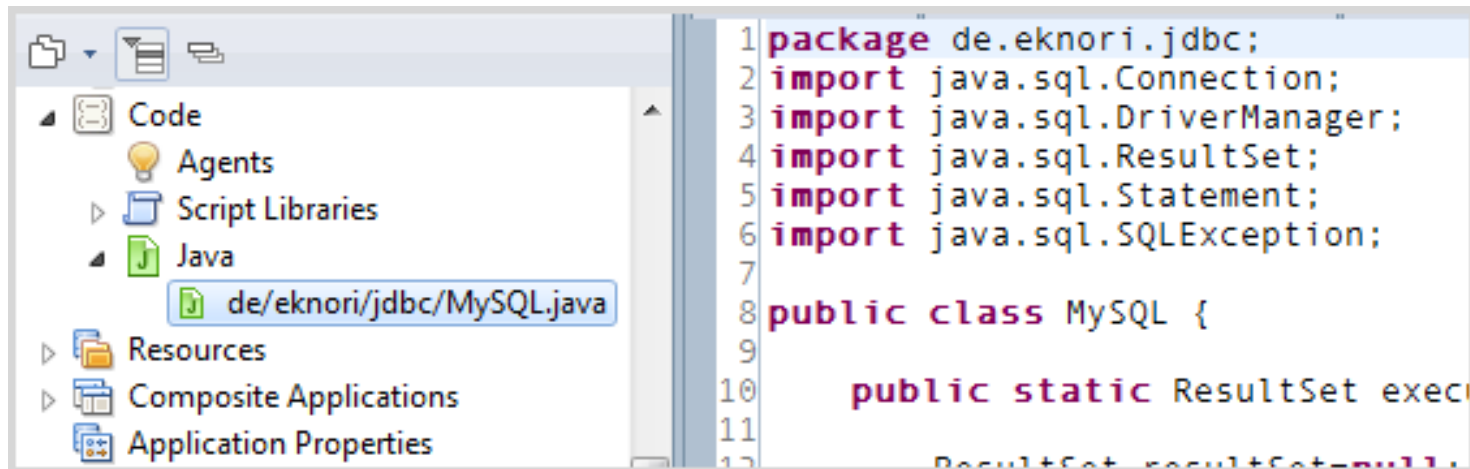
- New feature as of Notes / Domino 8.5.3
- Works on Server AND Client
- **XPagesPreload=1**
  - Loads XPages runtime components at server startup
- **XPagesPreloadDB=Server!!Db.nsf/XPage.xsp,myLocalDb.nsf**
  - Loads XPages runtime Java classes

```
09:33:41 XSP Command Manager initialized
09:33:41 HTTP JVM: Preloading XPages classes took 223ms
09:33:41 HTTP JVM: Preloading JSF config took 480ms
09:33:42 Lotus Traveler: Server started.
09:33:42 HTTP JVM: Preloading NSF Serv01!!cois_v2/cois_basic.nsf module took 883ms
09:33:44 HTTP JVM: Preloading NSF Serv01!!cois_v2/cois_crm.nsf module took 3038ms
09:33:45 HTTP Server: Started
```



## JAVA Design Element (8.5.3)

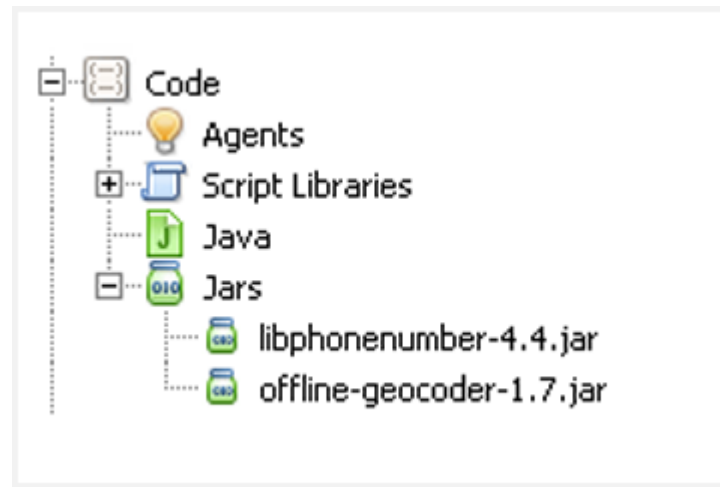
- A Java design element is created just like you create any other design element.
- Categorization in the Designer views is shown by using the "/" character to demark levels
- In the virtual file system, the class file appears separate from the .java file, under WebContent\WEB-INF\classes





## JAR Design Element ( 8.5.4 )

- Work with packaged Java code/libraries that are included in the application NSF
- Frees you from having to deploy the JARS to a server and/or include the source files uniquely in the application database
- Automatically manages the **classpath** and places the JAR file into **web-inf/lib**
- Only available to XPages applications
  - automatically loaded by the XPages runtime







# Themes

- Single Document Containing References to all your CSS Resources
  - **resource sections** reference the CSS files used
  - **control section** define what CSS classes are applied to specific controls
- XML Based and Easy To Learn
  - creating a new theme document prefills sample content
- Can Extend Other Themes
  - `<theme extends="webstandard">`
  - will automatically include all the resource and control definitions from that theme
  - built-in themes to extend
    - webstandard, notes, oneUI



# Themes – Resources Basics

- Can be simple
  - Just reference an internal CSS resource
- Can be complex
  - Multiple CSS Resources
    - Internal
    - External
  - Specify **client Side** JavaScript Resources
  - Specify 'Rendered' properties on resources
  - Send certain CSS resources to certain web browsers

```
<theme extends="webstandard" xmlns:xsi="http://www.w3.org/2001/XMLSchema-
  <!--
    Use this pattern to include resources (such as style sheets
    and JavaScript files that are used by this theme.
  -->
  <!--
  <resource>
    <content-type>text/css</content-type>
    <href>mystylesheet.css</href>
  </resource>
  -->
```



# Themes - Complex

- Specify If A Resource Is Only Used When Dojo Controls Are detected.
  - `<resource dojoTheme="true">`
- Browser / Client Detection
  - `<resource rendered="#{javascript:context.getUserAgent().isFirefox()}">`
- Reference Server Based / External Files
  - `<href>/.ibmxspres/global/theme/oneui/iehacks.css</href>`
  - `<href>http://www.someserver.com/resources/application.css</href>`

```
<control>
  <name>Tree.Tooltip</name>
  <property>
    <name>escape</name>
    <value>{false}</value>
  </property>
  <property>
    <name>contentType</name>
    <value>html</value>
  </property>
  <property>
    <name>value</name>
    <value>&lt;script type="dojo/method" >
      var id=helpStore.getValue(dijit.getEn
      loadTooltip(id,node.domNode);
    &lt;/script>&gt;
    &lt;script type="dojo/method" event="_onN
      dijit.hideTooltip(dojo.byId(node.domN
    &lt;/script>&gt;</value>
  </property>
</control>
```



# Theme Controls – The Basics

- Theme Controls are used to define default values for properties
  - mode=**concat**
    - Will append the properties onto any existing properties
  - mode=**override**
    - Will override the properties with those defined in the control
- Theme Control Names matchup with the types on controls on pages
  - or you can create your own Theme Control names
  - and then tell it what control to apply to using the **themelD** property

styleClass	
themelD	Button.icon.new

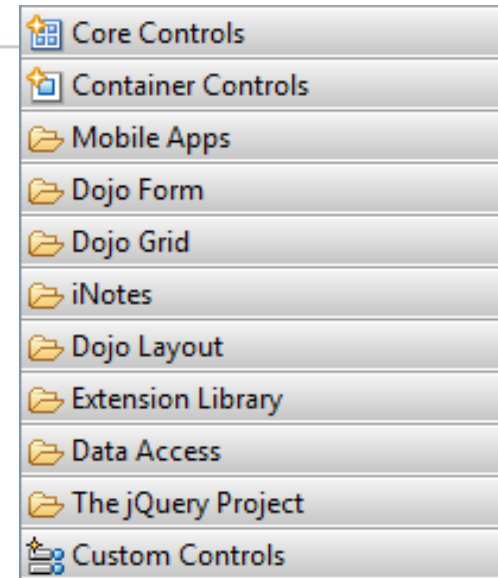
- C:\Program Files (x86)\IBM\Lotus\Notes\xsp\nsf\themes





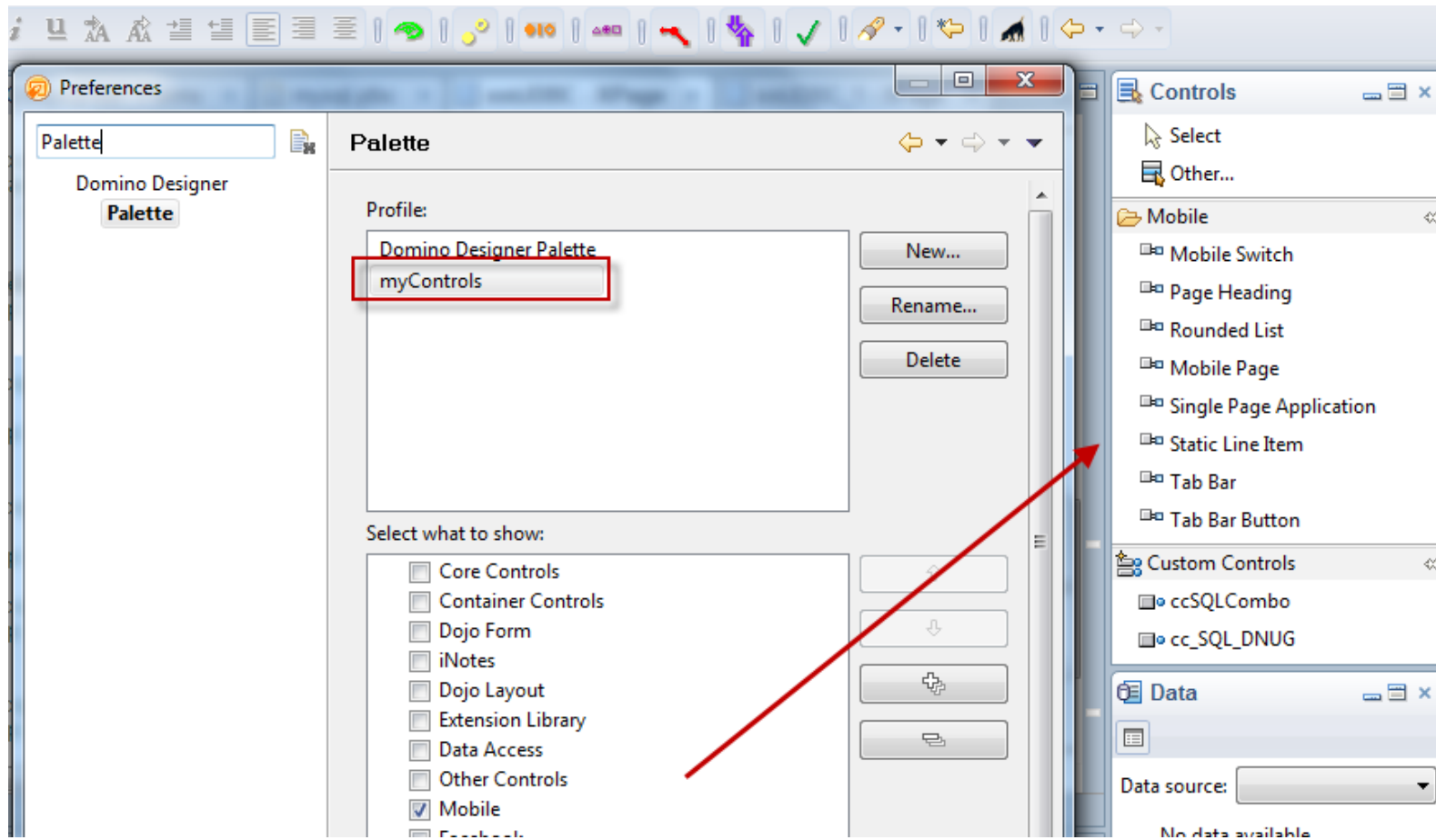
# Extension Library

- The XPages Extension Library provides a set of new XPages artifacts that are ready to use. It contains a set of new XPages controls that supplement the existing ones by providing new capabilities like:
  - An application layout object for rendering the main frame
  - Improved UI components, like dialogs, in context forms, etc.
  - A set of data pickers (value and name pickers)
  - .... and a lot more!





# Making Domino Designer work like you want



<http://ntf.gbs.com/nathan/escape.nsf/d6plinks/NTFN-8GP6RP>



# XPages Extension Library OpenNTF

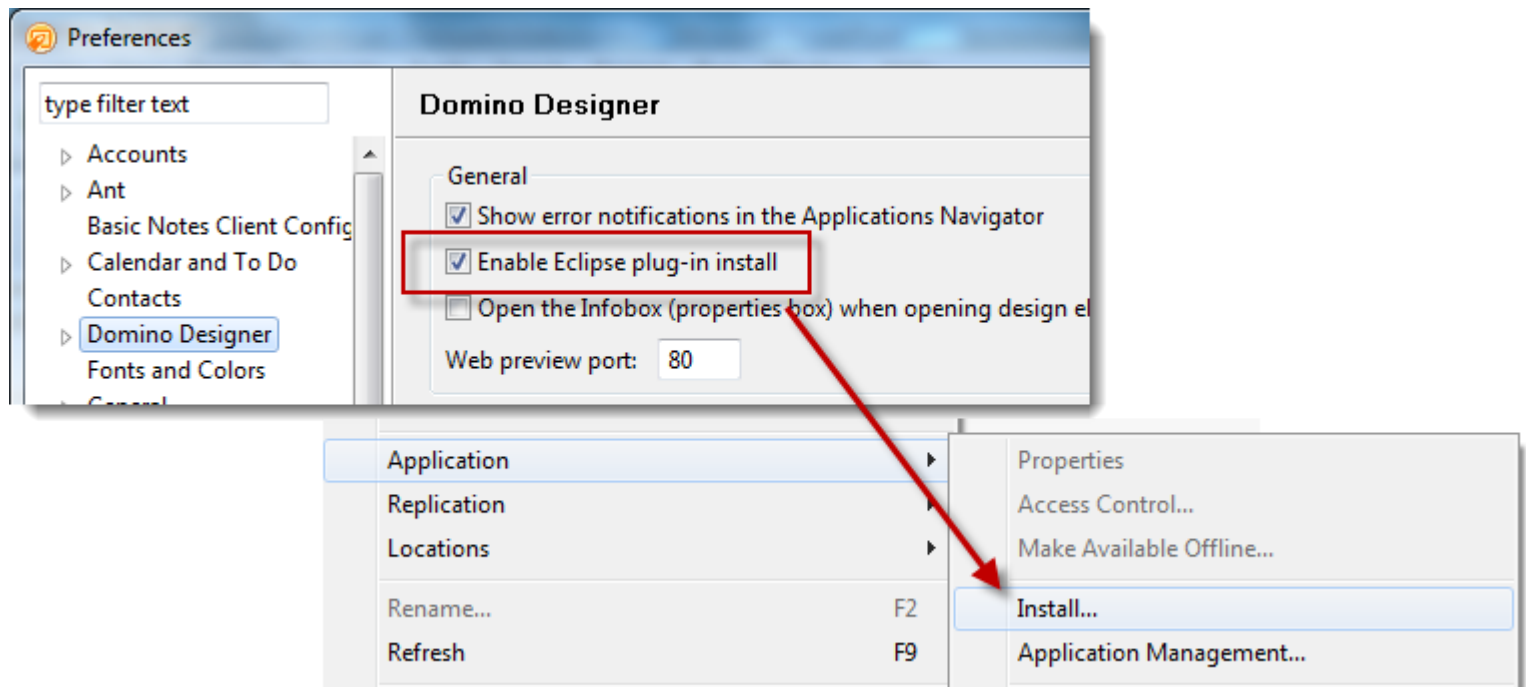
- There are 2 sets of plugins included in OpenNTF delivery
  - “extlib” and “extlibx”
- Each set is wrapped into its own XPages specific library
  - com.ibm.xsp.extlib.library
  - com.ibm.xsp.extlibx.library
- The “extlibx” library contains eXperimental code
  - RDBMS support
  - Social Enabler and others
- Experimental code can get added to the “extlib” library
  - once the code has matured and there is sufficient customer demand
- XPages apps can depend on both the extlib and extlibx libraries
  - RDBMS access requires both dependencies





# XPages ExtLib Deployment (Client)

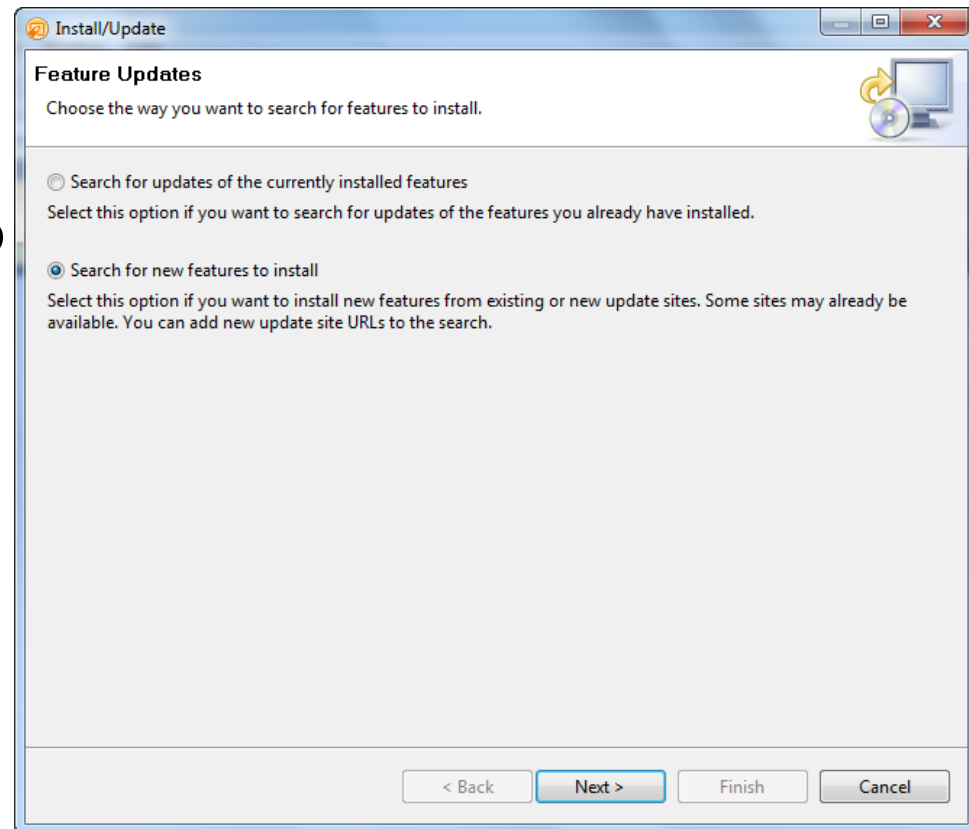
- Open Domino Designer.
- In **File** -> **Preferences** for Domino Designer, check Enable Eclipse plug-in install if it is not already checked.
- Unpack downloaded file





# XPages ExtLib Deployment (Client)

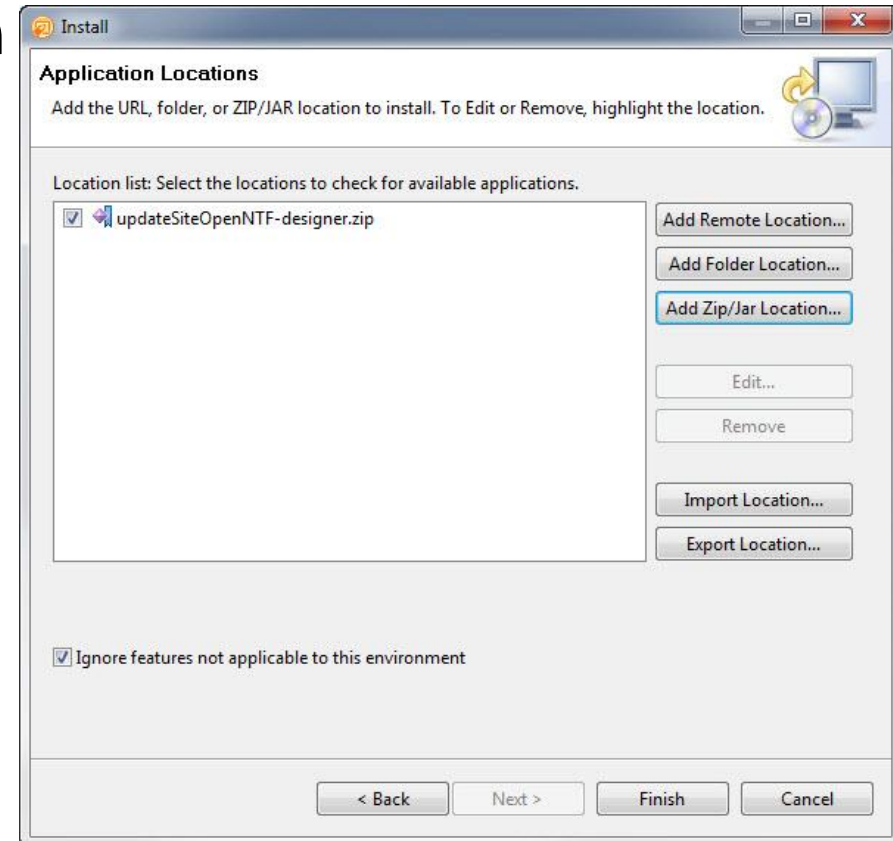
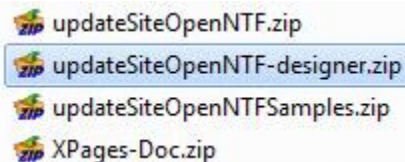
- Click **File -> Application -> Install** to open the Install/Update dialog
- Select **Search for new features** to install and click **Next**





# XPages ExtLib Deployment (Client)

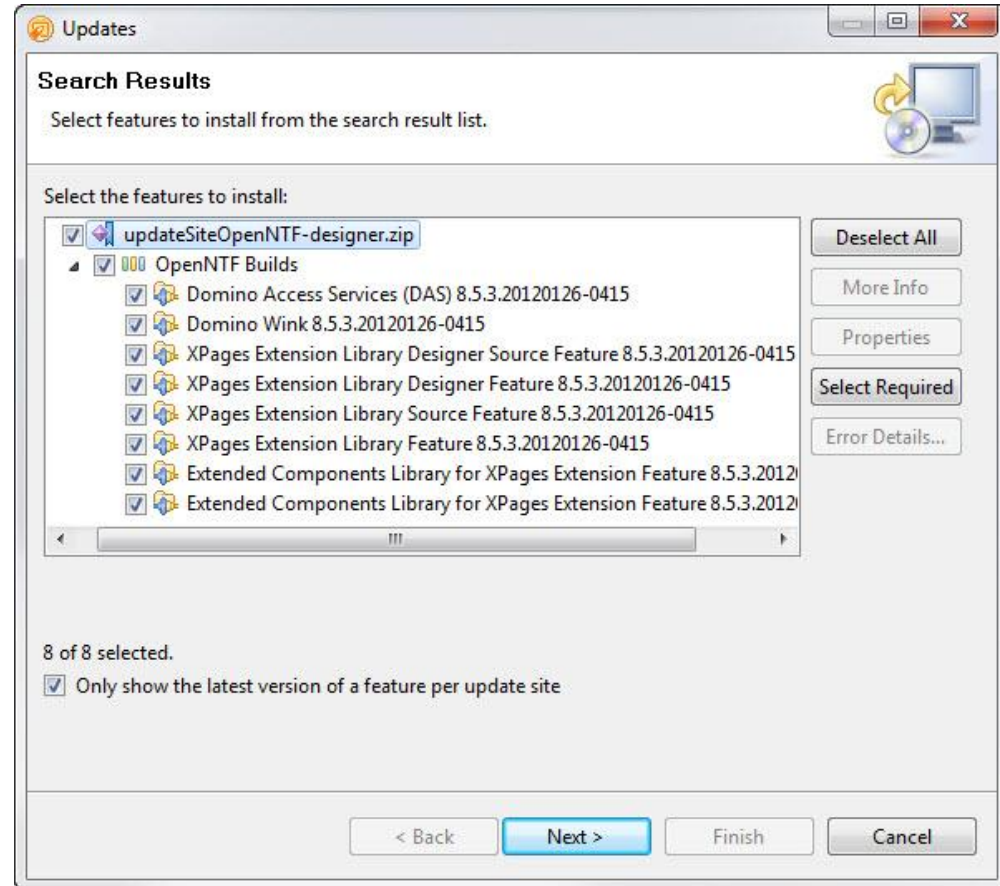
- Use the **Add Zip/Jar Location** button to add updateSiteOpenNTF-designer.zip if it is not already there.
- Ensure that updateSiteOpenNTF-designer.zip is selected and click **Finish**





# XPages ExtLib Deployment (Client)

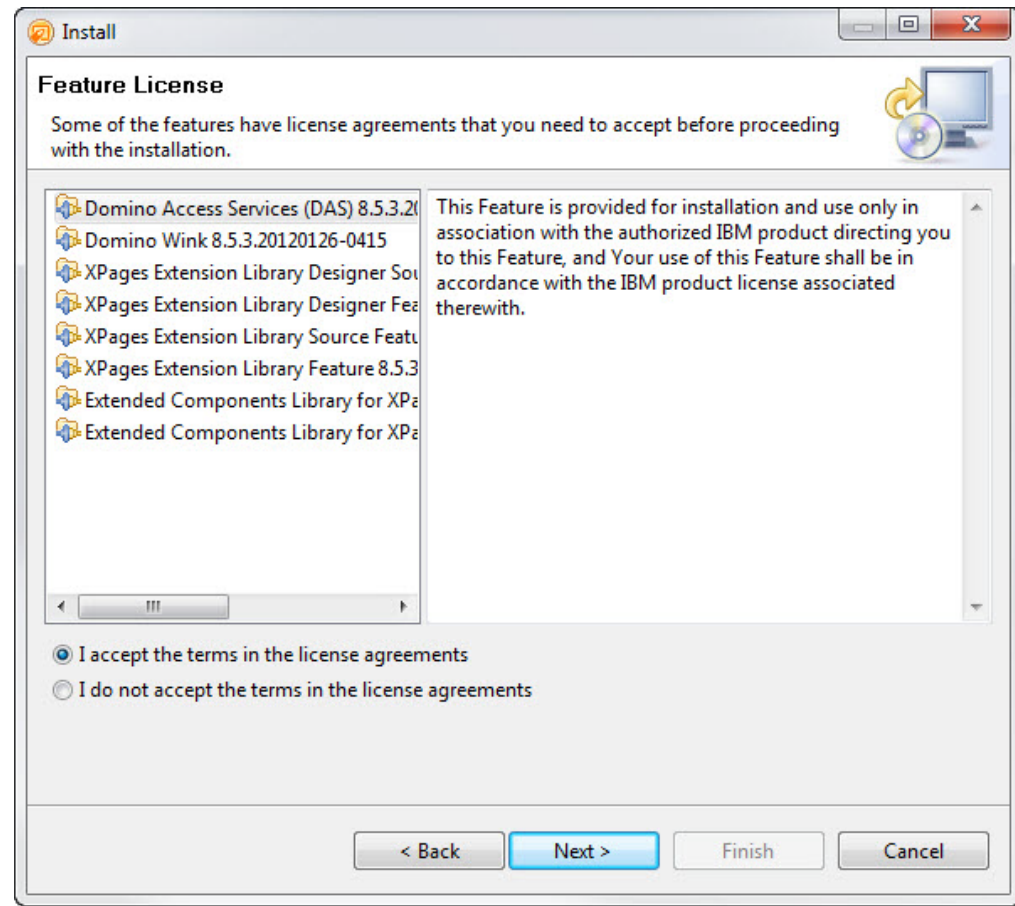
- Select all features if asked
- Click the Next Button





# XPages ExtLib Deployment (Client)

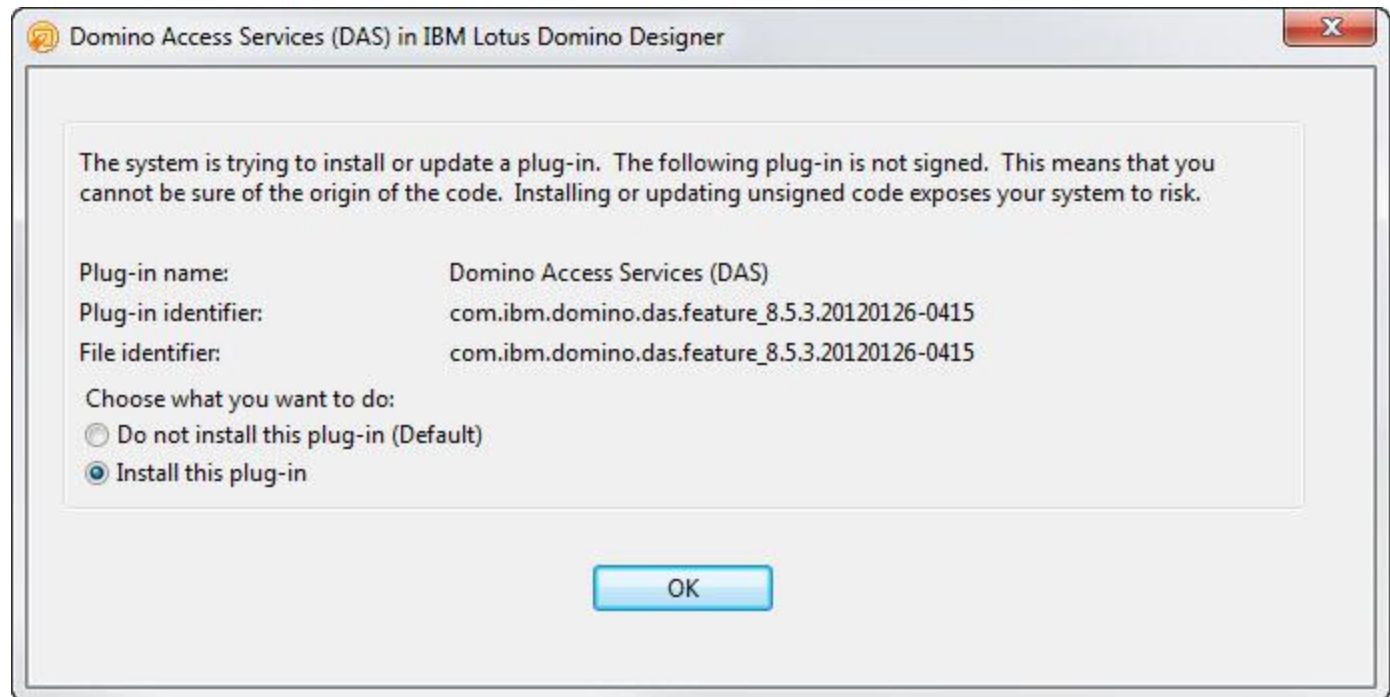
- Accept the feature license
- Click the Next Button





# XPages ExtLib Deployment (Client)

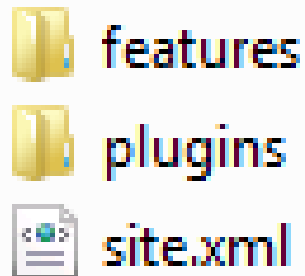
- Select Install this plug-in for each unsigned plug-in
- Restart Domino Designer and Notes® after the update completes





## Previewing Ext Lib features in a browser

- Unpack updateSiteOpenNTF-designer.zip to **domino\workspace\applications\eclipse** in the **Domino data directory**.
- Take care to strictly respect the directory hierarchy.



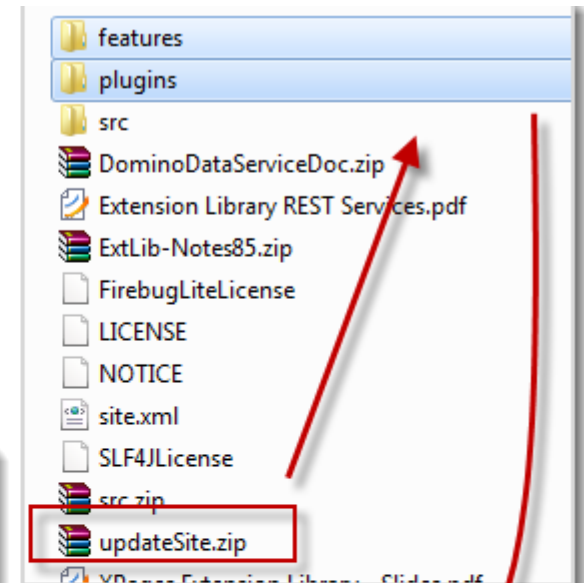
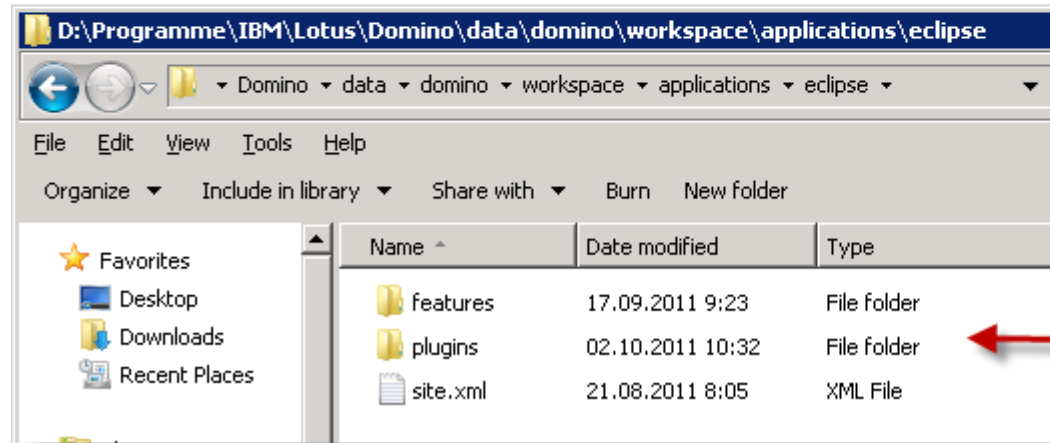
### Error 500

HTTP Web Server: Command Not Handled Exception



# XPages ExtLib Deployment (Server)

- Unpack updatesite.zip
- Copy „features“ and „plugins“ to server
- Stop / Start HTTP task



<Domino-Data>\domino\workspace\applications\eclipse





## Verify Installation

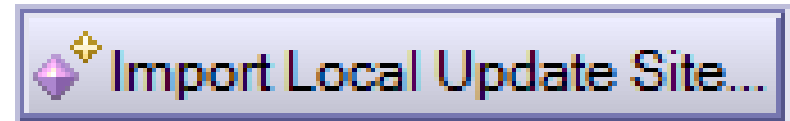
- To verify the plugins for the extlib and extlibx XPages libraries are properly installed, you should use the OSGI command on the server console
- **tell http osgi ss com.ibm.xsp.extlib**

```
tell http osgi ss com.ibm.xsp.extlib
24.02.2012 16:55:22 Framework is launched.
24.02.2012 16:55:22 id State Bundle
24.02.2012 16:55:22 10 ACTIVE com.ibm.xsp.extlib.domino_8.5.3.20120126-0415
24.02.2012 16:55:22 11 ACTIVE com.ibm.xsp.extlib.mobile_8.5.3.20120126-0415
24.02.2012 16:55:22 12 ACTIVE com.ibm.xsp.extlib.core_8.5.3.20120126-0415
24.02.2012 16:55:22 13 ACTIVE com.ibm.xsp.extlib.controls_8.5.3.20120126-0415
24.02.2012 16:55:22 15 INSTALLED com.ibm.xsp.extlib.designer.tooling_8.5.3.20120126-0415
24.02.2012 16:55:22 17 RESOLVED com.ibm.xsp.extlibx.source_8.5.3.20120126-0415
24.02.2012 16:55:22 18 RESOLVED com.ibm.xsp.extlibx.relational.derby_8.5.3.20120126-0415
24.02.2012 16:55:22 19 RESOLVED com.ibm.xsp.extlib.designer.tooling.feature.source_8.5.3.20120126-0415
24.02.2012 16:55:22 20 ACTIVE com.ibm.xsp.extlib_8.5.3.20120126-0415
24.02.2012 16:55:22 Fragments=27
24.02.2012 16:55:22 21 ACTIVE com.ibm.xsp.extlibx.sbt_8.5.3.20120126-0415
24.02.2012 16:55:22 22 <<LAZY>> com.ibm.xsp.extlibx.core_8.5.3.20120126-0415
```



## XPages ExtLib Deployment in Domino 8.5.3

- Unzip download
- Unzip "updateSiteOpenNTF-designer.zip,,
- Create a new application dbname.nsf on server  
Use template (Eclipse Update Site)
- Modify ACL, Anonymous at least needs Reader Access.
- Open Application
- Click "Import Local Update Site,,



- **OSGI\_HTTP\_DYNAMIC\_BUNDLES=dbname.nsf**

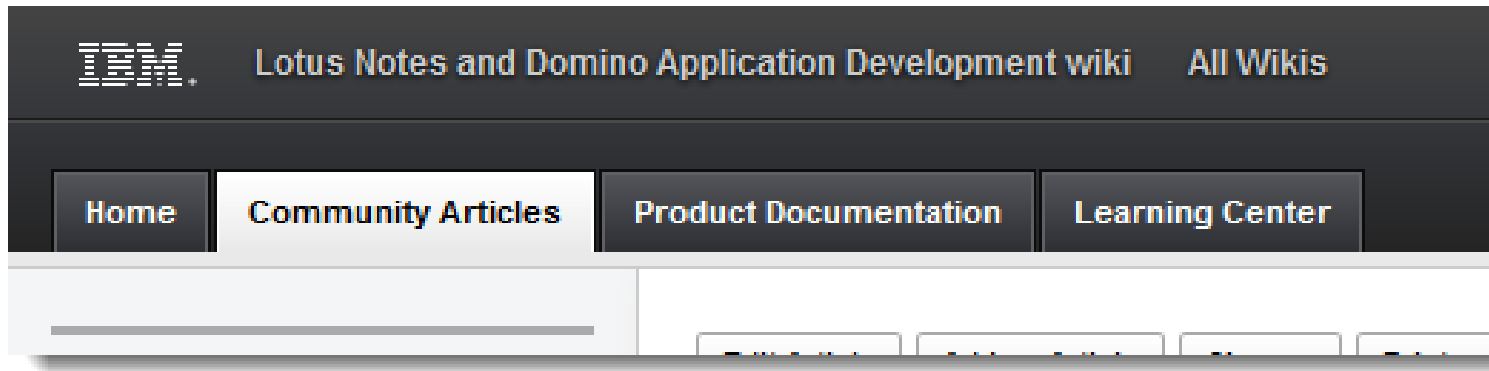
```
set con OSGI_HTTP_DYNAMIC_BUNDLES=ExtLibUpdate.nsf
```

```
This system variable cannot be set via the server console. You must edit NOTES.INI to set this variable.
```

- Start / Stop HTTP task on server



# XPages ExtLib Deployment in Domino 8.5.3

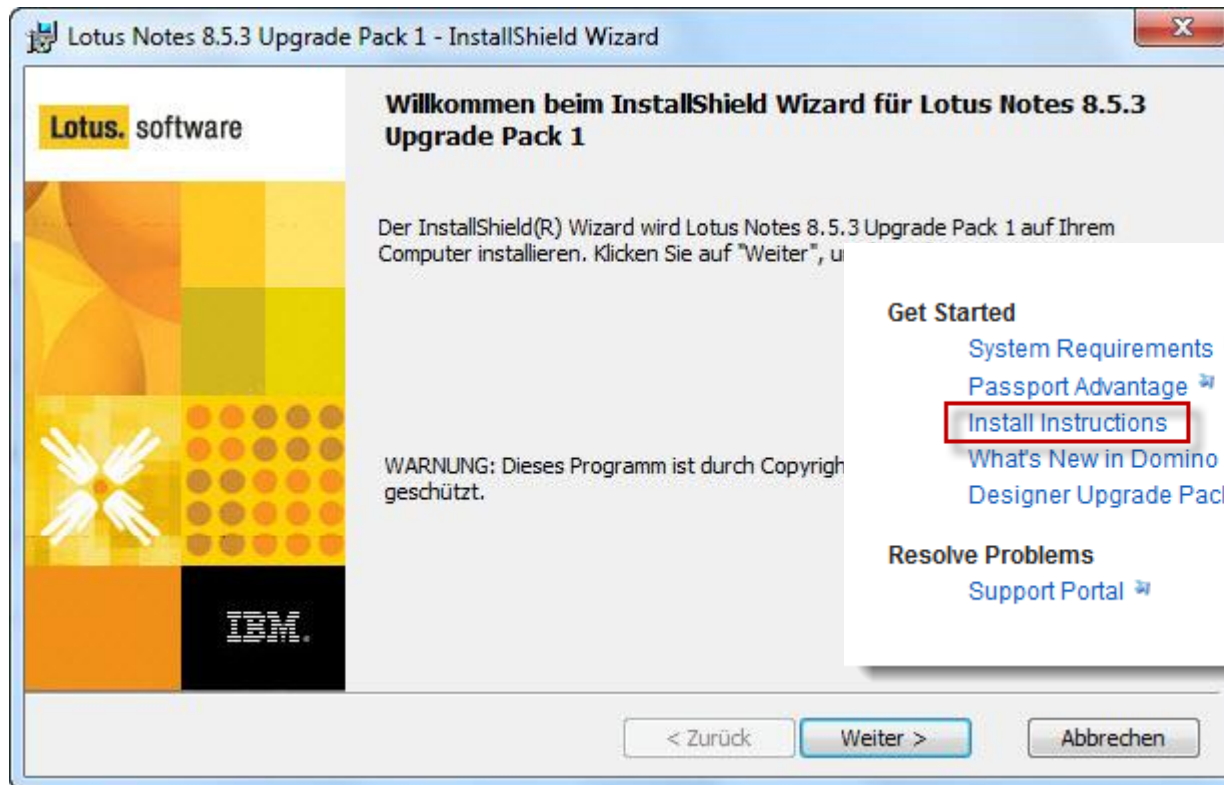


- XPages Extension Library Deployment in Domino 8.5.3 and IBM XWork Server
  - [http://www-10.lotus.com/ldd/ddwiki.nsf/dx/XPages\\_Extension\\_Library\\_Deployment](http://www-10.lotus.com/ldd/ddwiki.nsf/dx/XPages_Extension_Library_Deployment)



## 8.5.3 Upgrade Pack 1

- <http://www-10.lotus.com/ldd/ddwiki.nsf/xpViewCategories.xsp?lookupName=What%20is%20new%20in%20Domino%20Designer%208.5.3%20Upgrade%20Pack%201>



### Get Started

- [System Requirements](#)
- [Passport Advantage](#)
- [Install Instructions](#)
- [What's New in Domino Designer Upgrade Pack 1](#)

### Resolve Problems

- [Support Portal](#)

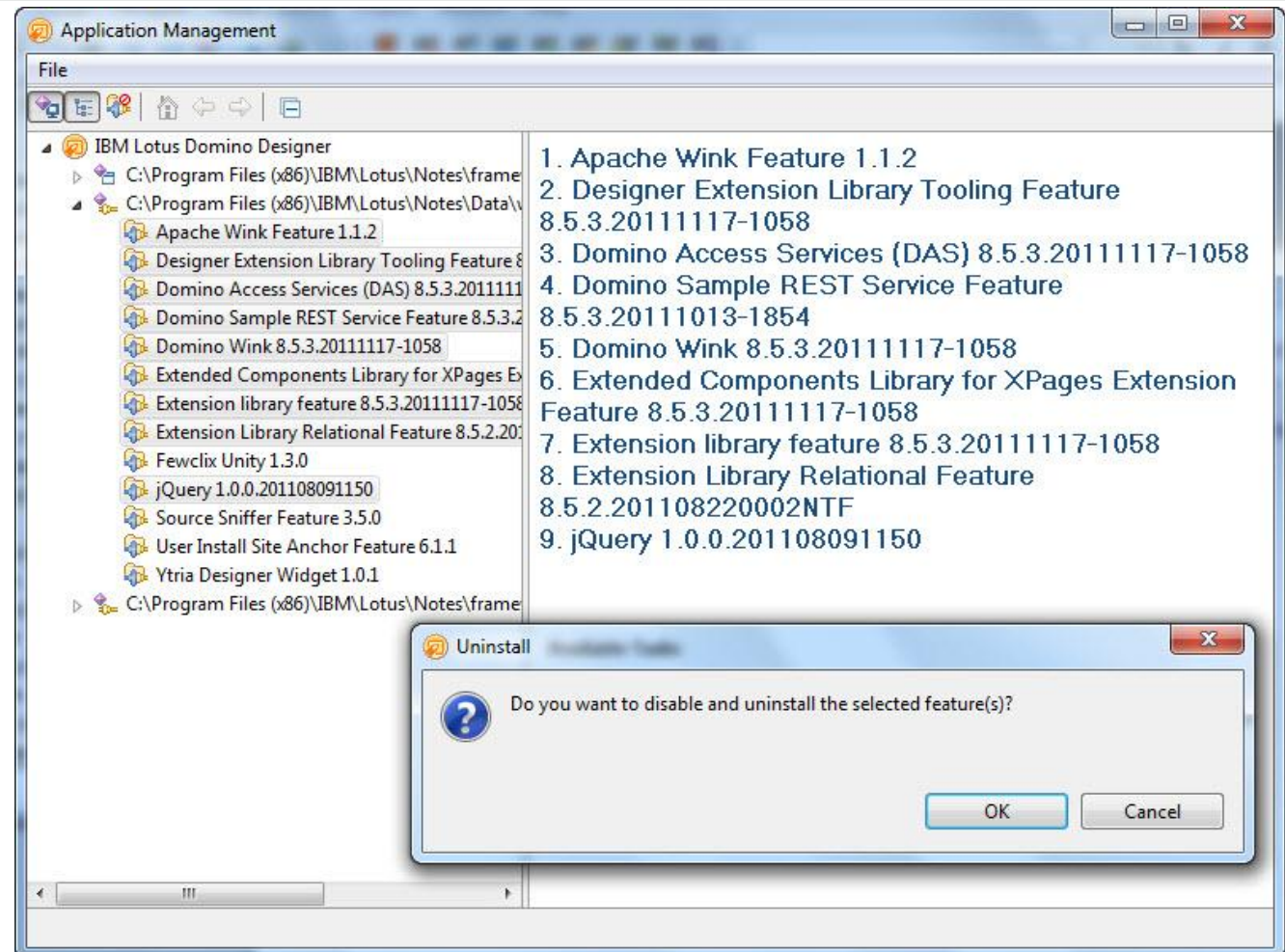
### Documentation

- [IBM Lotus Domino and Notes Information Center](#)
- [Domino Designer Tutorial](#)
- [Domino Designer XPages Extension Library](#)
- [Domino Data Service](#)



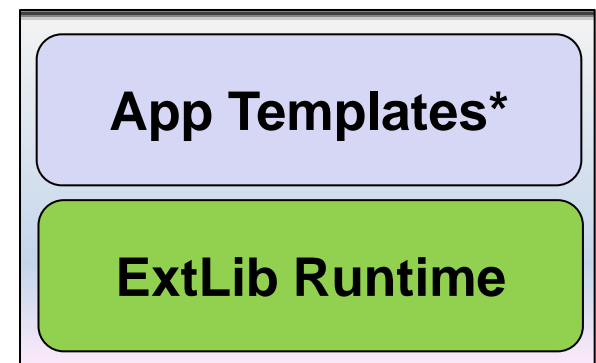
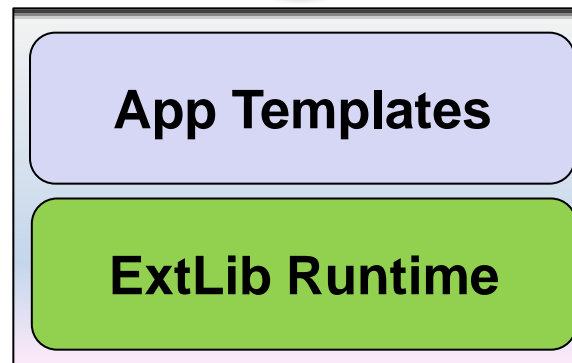
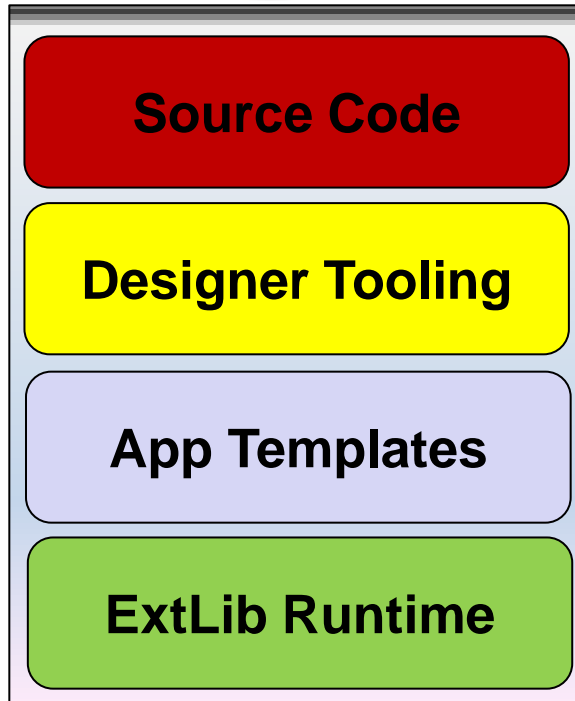
## 8.5.3 Upgrade Pack 1

- Uninstall existing components first !!





## 8.5.3 Upgrade Pack 1- What is installed?

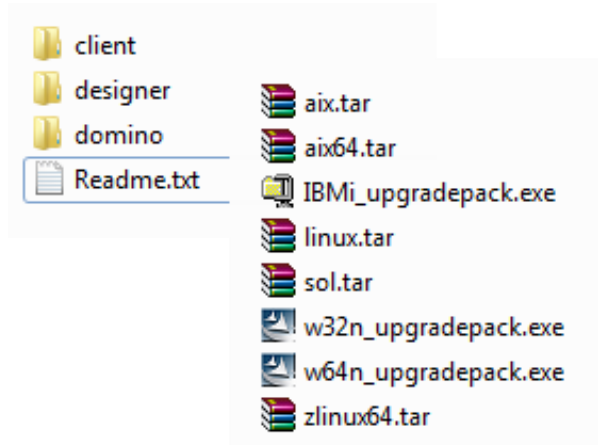


\* Discussion template installed with Notes client (no Teamroom)



# XPages Extension Library Upgrade Pack 1

- A set of Java plug-ins that greatly extend XPages functionality
- Works on **web**, Notes **client** and **mobile** devices
- Applicable to Domino, XWork Server, Notes, Domino Designer
- Cool new Domino Designer enhancements for Ext Lib controls
- Enhanced **TeamRoom** and **Discussion templates**
- A fully accessible runtime library and templates
- Implemented using the XPages Extensibility API
- Built to IBM globalization standards
- Online documentation
- Runtime is localized
- Officially **supported** by IBM
- Includes **source code** !

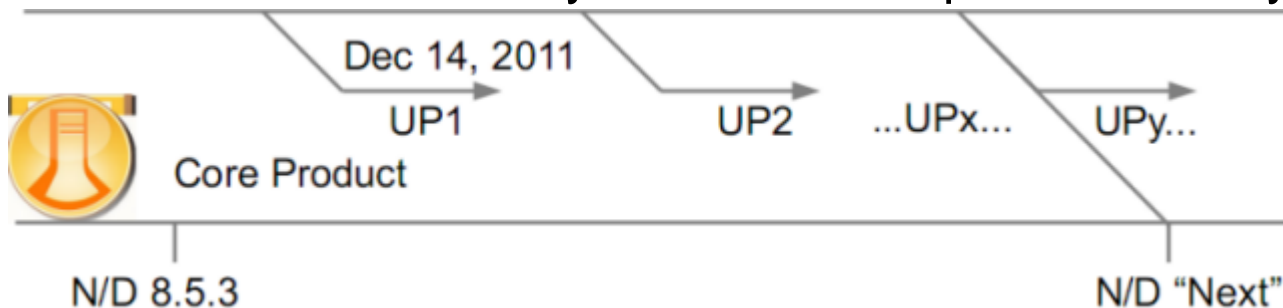






# Product, OpenSource, Upgrade Pack

- Code is first released on OpenNTF
  - Available early and gives full transparency on what is being done
  - Facilitates quicker user evaluation, feedback and contributions
- Pieces from OpenNTF are selected and delivered as UP
- Upgrade Packs are supported by IBM
  - Upgrade Packs are delivered on a shorter release cycle than products
  - Upgrade Packs are integrated into the next revision of the product
  - Upgrade Packs do not modify the core base platform in any way !







# Extension Library Demo Application

The screenshot shows the XPages Extension Library Demo Application. At the top, there is a header bar with the XPages logo, a 'Home' link, and the version information 'XPages ExtLib version: 8.5.3.20111013-1854' and 'Enable Firebug'. Below the header, there is a navigation bar with tabs for 'Core', 'Domino', 'iNotes', 'Mobile', 'OneUI', and 'REST'. A search bar with 'Choice #1' and 'Enter Keywords' is also present. The main content area displays the title 'XPages Extension Library Demonstration Application' and the XPages logo. Below the logo, the text 'Exceptional Web UI' and '@' are shown, followed by 'Exceptional Speed'. On the left side, there is a sidebar with a 'Home' link and a list of extension categories: 'Outline & Menu', 'In Context Editing', 'In Context Dialogs', 'Dynamic Tabs', 'Dynamic Page', 'Multi Image', 'Switch Control', 'Dialogs', 'Tooltips', 'Value Pickers', 'Extended Form Controls', 'Scrolling Dataset', 'Dojo Form Controls', 'Dojo Layout', 'Dojo Effects', 'API - Names', and 'Debugging'. At the bottom right of the sidebar, there are links for 'Administration' and 'More Actions'.



## **com.ibm.xsp.extlib.util.ExtLibUtil**

- Get version of installed Extension Library
  - `var v = com.ibm.xsp.extlib.util.ExtLibUtil.getExtLibVersion();`
  - `return "XPages ExtLib version: "+ v`

**XPages ExtLib version: 8.5.3.20111027-1245**



## com.ibm.xsp.extlib.util.ExtLibUtil

- Contains many common methods
  - `import static com.ibm.xsp.extlib.util.ExtLibUtil.*;`
- *getCurrentSession(), getCurrentDatabase() ...*
- *Many more to access scoped variables etc.*

```
private Database _db = getCurrentDatabase();  
private DocumentCollection _dc;  
private Session _session = getCurrentSession();
```



# XPages Relational Database Support

- Leverages JDBC when connecting to relational databases
  - Accesses any database with a JDBC driver available
  - You could access
    - DB2, Oracle, MS SQL, MySQL, Derby... you name it!
  - You need to obtain the JDBC driver from the database vendor or third party provider
- RDBMS data is accessed directly – no synchronization is performed with NSF
- Xpages efficiently manages the connections through a connections pool
- Uses NSF specific connections
- The data is accessed using a set of dedicated data sources



# XPages Relational Database Support

- extlibx library adds 2 new data sources:
  - JDBC Query for Read Only access
  - JDBC RowSet for CRUD (create/read/update/delete) access.
    - Current implementation is based on `com.sun.rowset.CachedRowSetImpl`
    - Could be configured to use your own via the `rowSetJavaClass` property
- Each of the provided new data sources could be easily utilized either by:
  - the core View Container Control (`xp:viewPanel` element)
  - the XPage itself (`xp:view` element)
- The new data sources are now available in the Domino Designer Property Panel



# XPages Relational Database Support

XPAGES Home W3 Help

XPages Relational Data Access Demo Setup

## XPages Relational Database Support

Home

- Static View Panel - Table
- Static View Panel - Query
- Static View Panel - Query+Count
- Static View Panel - SQL File
- Static View Panel - Parameter
- Dynamic View Panel
- Cached RowSet Read/Write data source
- SQL Query
- Meta Data
- @Functions()

Property	Value
accessibility	
basics	
data	
data	
first	
indexVar	
pageName	
rows	30
value	
var	
format	

xe:jdbcQuery  
xe:jdbcRowSet  
xe:objectData  
xp:dominoDocument  
xp:dominoView

C:\Program Files (x86)\IBM\Lotus\Notes\Data\workspace\derby\XPagesJDBC

View Tools Help

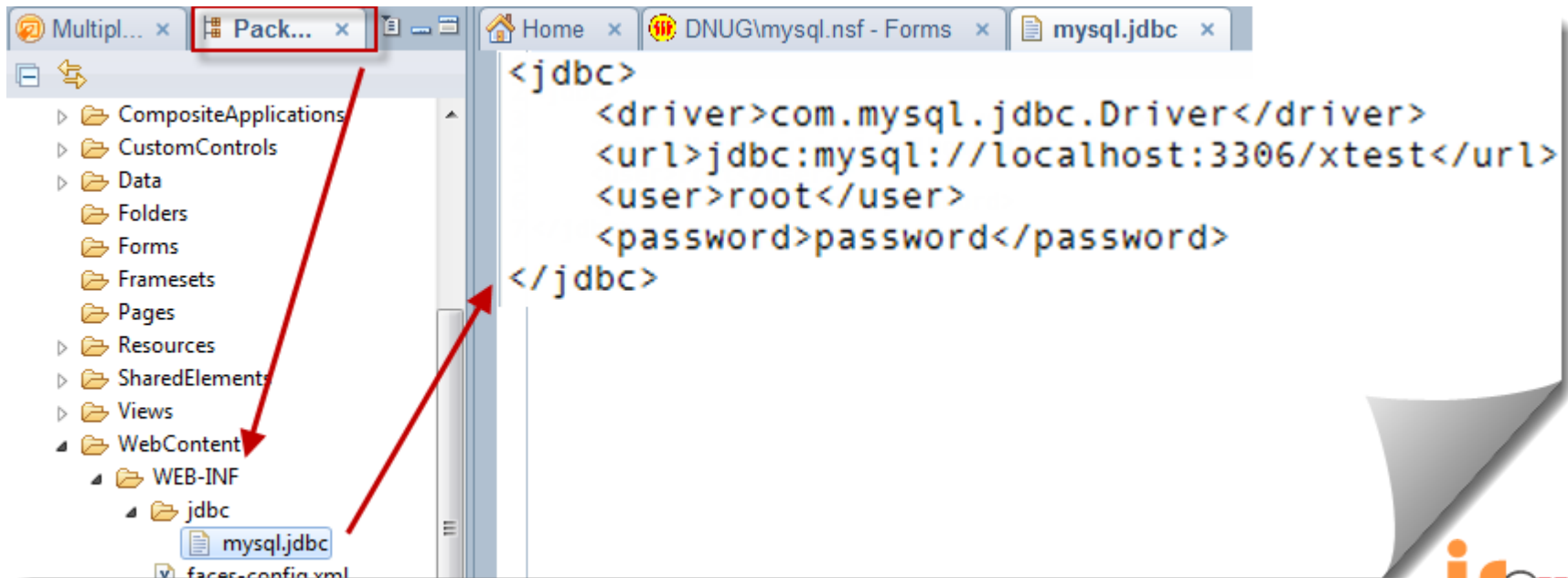
Include in library Share with Burn New folder

Name	Date modified	Type
log	02.10.2011 06:45	File folder
seg0	02.10.2011 06:45	File folder
tmp	02.10.2011 06:45	File folder
db.lck	02.10.2011 06:45	LCK File
service.properties	02.10.2011 06:45	PROPERTIES File



# XPages Relational Database Support

- To connect to your RDBMS you need to create a special file resource
  - .jdbc” extension (for example “db2test.jdbc”)
  - specify the JDBC driver class to be used
  - the database host/port/name and users' credentials





# Server Side JavaScript APIs and @Functions

## ■ Currently implemented @Functions:

- @JdbcInsert
- @JdbcUpdate
- @JdbcDelete
- @JdbcExecuteQuery
- @JdbcDbColumn
- @JdbcGetConnection

```
<xp:button value="Insert 'Homer'" id="button1">
  <xp:eventHandler event="onclick" submit="true"
    refreshMode="partial" refreshId="wrapper">
    <xp:this.action>
      <![CDATA[#{javascript:var v = {
        idpeople: "7",
        firstName: "Homer",
        lastName: "Simpson",
        country: "Springfield,USA",
        age: "100"
      }
      var c = @JdbcInsert("mysql","people",v)

      }]]>
    </xp:this.action>
  </xp:eventHandler>
</xp:button>
```

- Used to simplify various RDBMS operations
- Allows programmatic access to RDBMS data







## RDBMS Future

- XPages Extension Library OpenNTF and Relational support continues to evolve further and expected features in the pipeline include:
  - Global Domino server based RDBMS connection definition ability
  - Domino Designer tooling to work with the RDBMS tables' metadata
  - Even better JDBC connection pooling implementation using Apache DBCP
  - JDBC Query via REST services
  - Additional @Functions
- Another new interesting OpenNTF project
  - JDBC Access for IBM Lotus Domino (DomSQL)
    - <http://www.openntf.org/internal/home.nsf/project.xsp?action=openDocument&name=JDBC%20Access%20for%20IBM%20Lotus%20Domino>



## Domino JDBC Access (DomSQL)

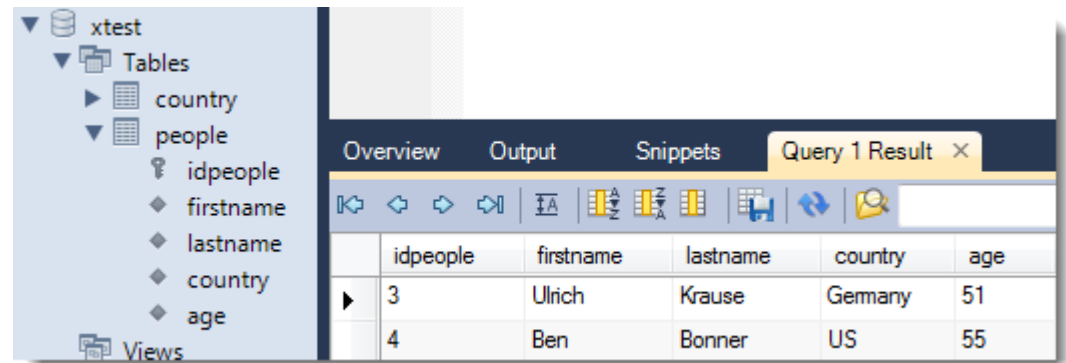
- Exposes Domino data as relational tables and provides easy access to the tables using a JDBC driver
  - Expand the query capability of Note/Domino (N/D)
    - Native N/D views lack some key features like dynamic queries and joins between views. The features Domino views lack are exactly those at which SQL excels
  - Reporting – Data analytics
    - SQL is the de facto standard used by reporting/data analysis tools. Making N/D data behave like relational data suddenly opens it to a large set of tools that understand JDBC
- As of now, it only does read-only
- Uses another very popular open source project called **SQLite** (<http://www.sqlite.org/>)



# XPages Relational Database Support

- Do I need the extension Library ?????? ...

- What do we need??
- Application
- JDBC – Driver

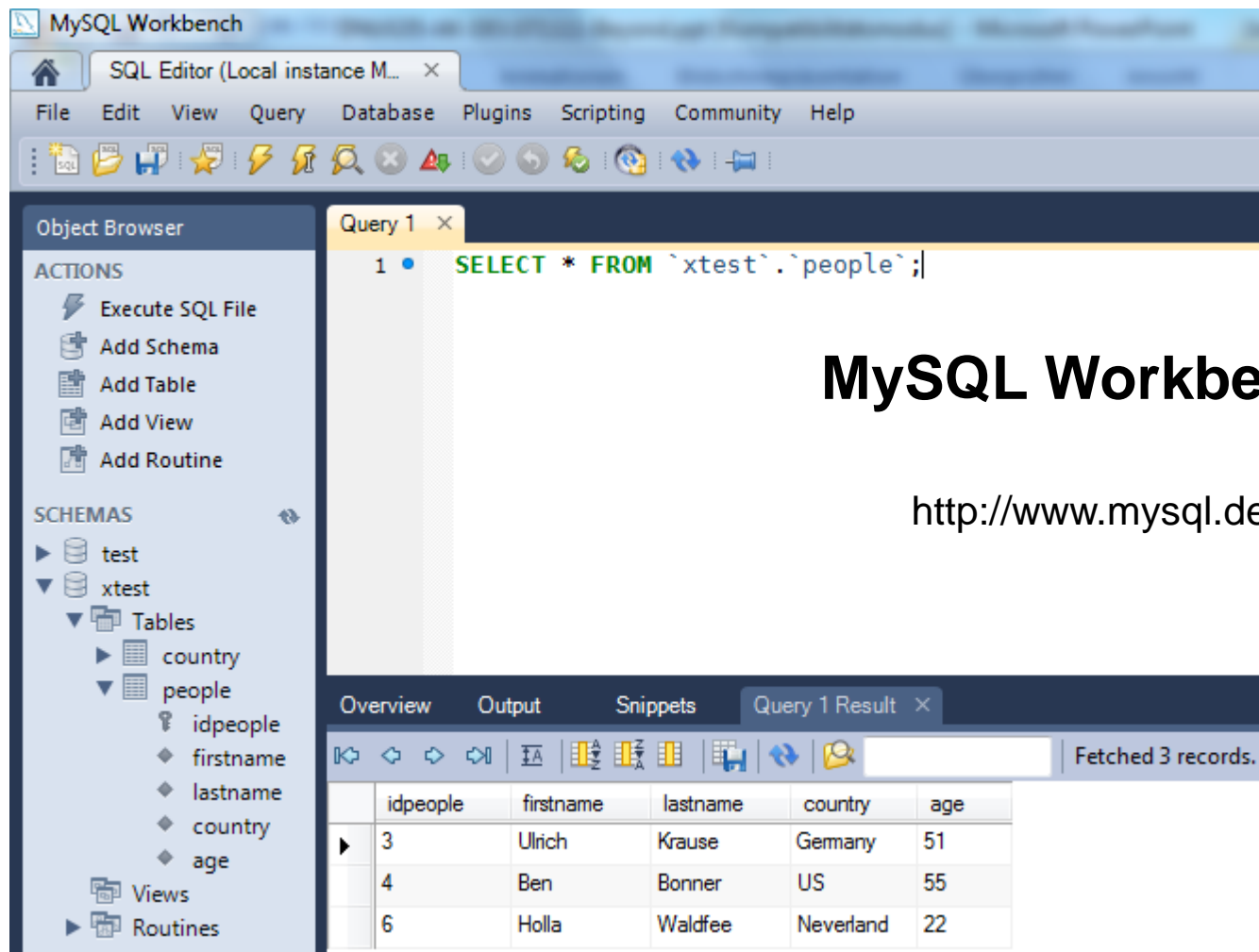


	idpeople	firstname	lastname	country	age
▶	3	Ulrich	Krause	Germany	51
	4	Ben	Bonner	US	55

- MySQL <http://dev.mysql.com/downloads/connector/j/>
  - Available for all major databases
- Code to access the database using the driver  
(Query / Insert / Update / Delete )



# XPages Relational Database Support



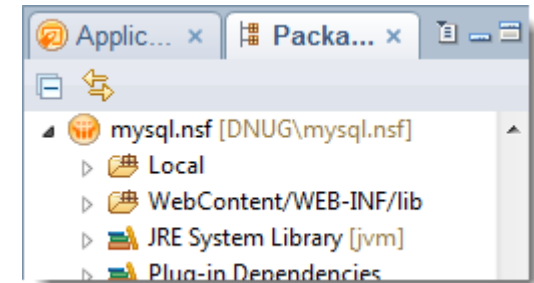
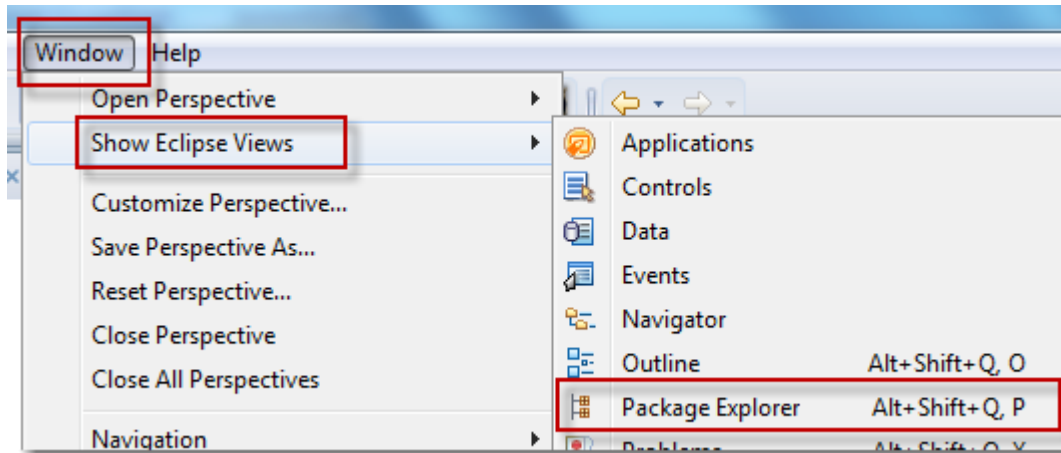
**MySQL Workbench**

<http://www.mysql.de/products/workbench/>

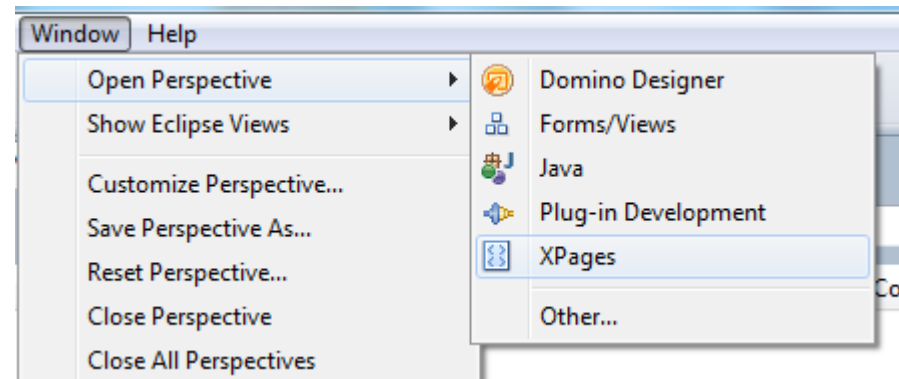


# Java in XPages

## ■ Package Explorer



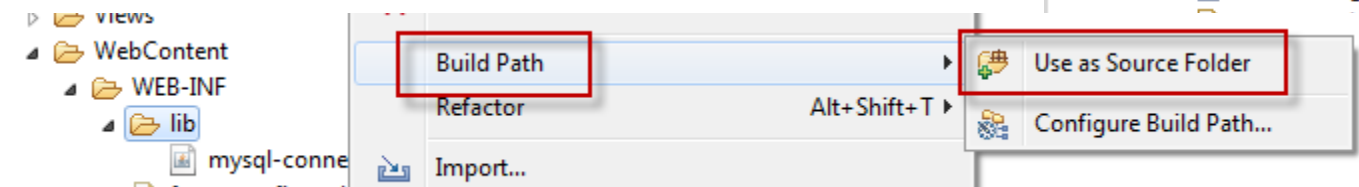
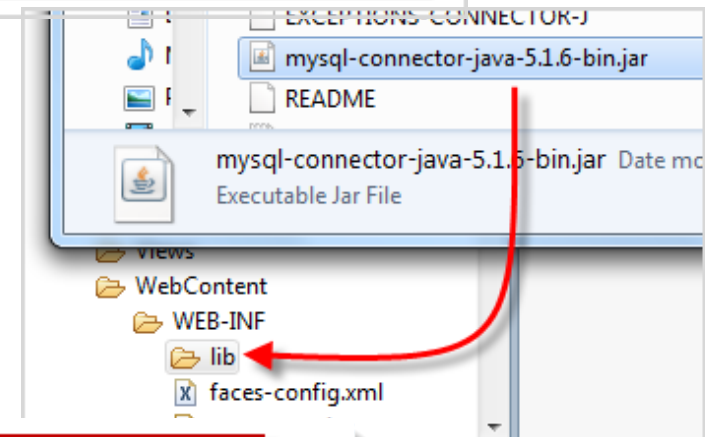
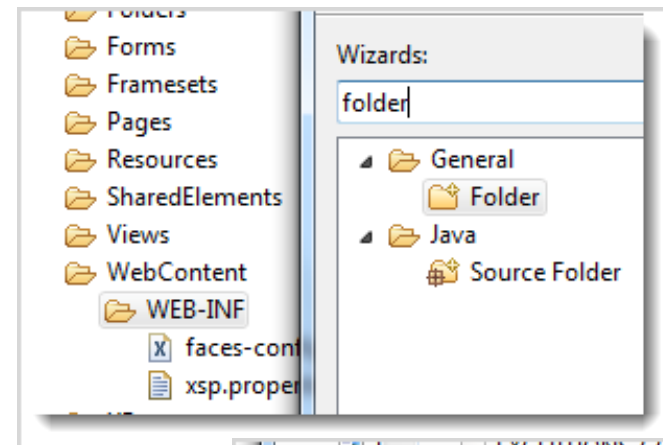
## ■ Predefined Perspectives





# XPages Relational Database Support

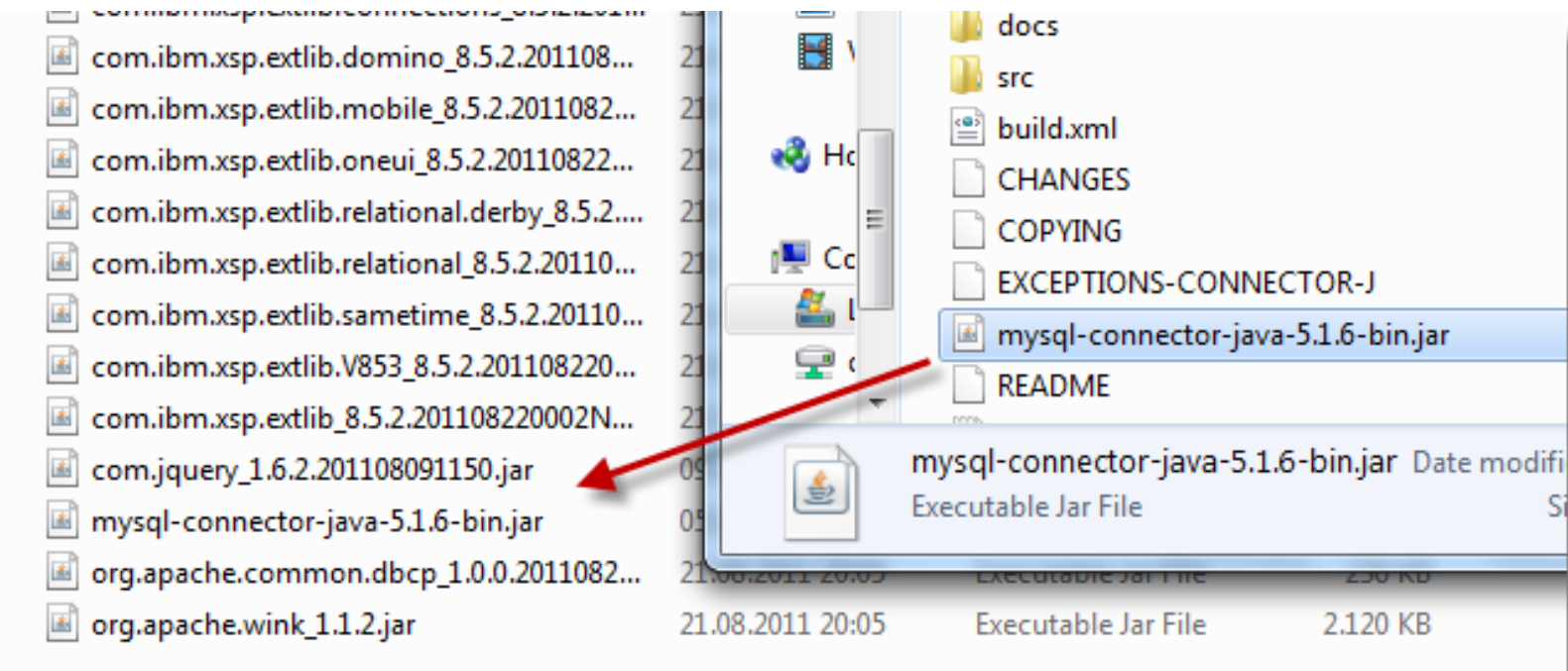
- Install Driver (Client)
  - Open Package Explorer
  - Create Folder
    - WebContent → WEB-INF → lib
  - Drag/Drop driver file into folder
  - Buildpath
    - RightClick → Build Path → Use as Source Folder





# XPages Relational Database Support

- Install Driver (Server)
  - data\domino\workspace\applications\eclipse\plugins
  - Stop / Start HTTP task





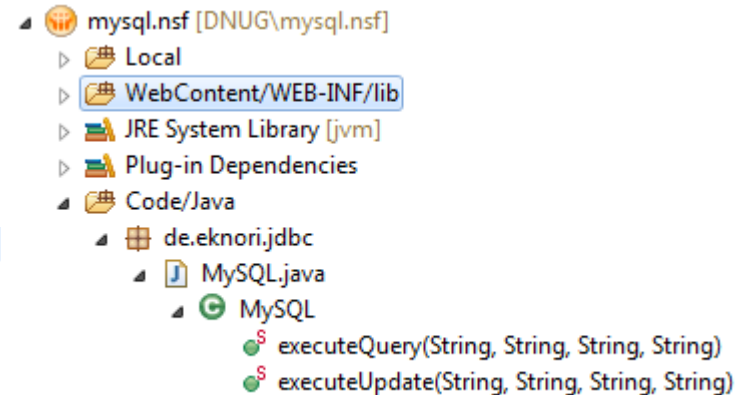


# XPages Relational Database Support

## ■ de.eknori.jdbc.MySQL

- executeQuery()
- executeUpdate()

```
1 package de.eknori.jdbc;
2 import java.sql.Connection;
3 import java.sql.DriverManager;
4 import java.sql.ResultSet;
5 import java.sql.Statement;
6 import java.sql.SQLException;
7
8 public class MySQL {
9
10     public static ResultSet executeQuery(String connString, String userName,
11
12         ResultSet resultSet=null;
13         Statement st = null;
14         Connection conn = null;
15
16         try {
17             Class.forName("com.mysql.jdbc.Driver").newInstance();
18             conn = DriverManager.getConnection(connString, userName, pwd);
19             st = conn.createStatement();
20             resultSet = st.executeQuery(query);
21         }
22         catch(Exception e){
```

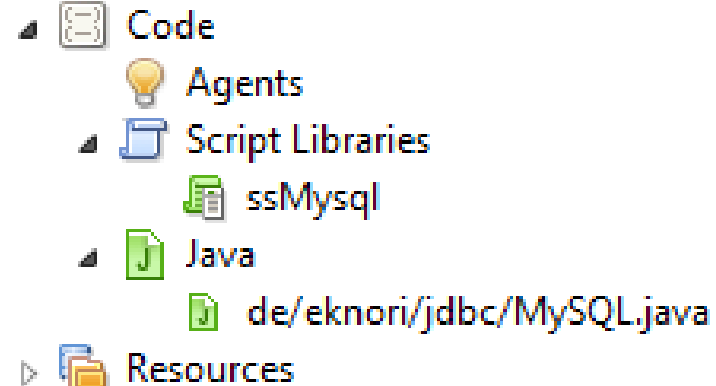




# XPages Relational Database Support

## ■ JavaScript Library

```
8 function getSQLData() {
9     var query=compositeData.SQLQuery;
10    var rs:java.sql.ResultSet = de.eknori.jdbc.MySQL.executeQuery(connS
11    var rsmd:java.sql.ResultSetMetaData = rs.getMetaData();
12    var out = new Array();
13    while (rs.next()){
14        var row = new Array();
15        for (i=1; i<rsmd.getColumnCount()+1; i++) {
16            switch (rsmd.getColumnType(i))
17            { case 12: row.push(rs.getString(i));
18              break;
19              case 4: row.push(rs.getInt(i));
20                break;
21              default: row.push(rs.getString(i));
22            }
23        }
24        out.push(row);
25    }
26    return out;
27 }
28
29 function setSQLData(query) {
30     return de.eknori.jdbc.MySQL.executeUpdate(connString,userName,pwd,q
31 }
32
```







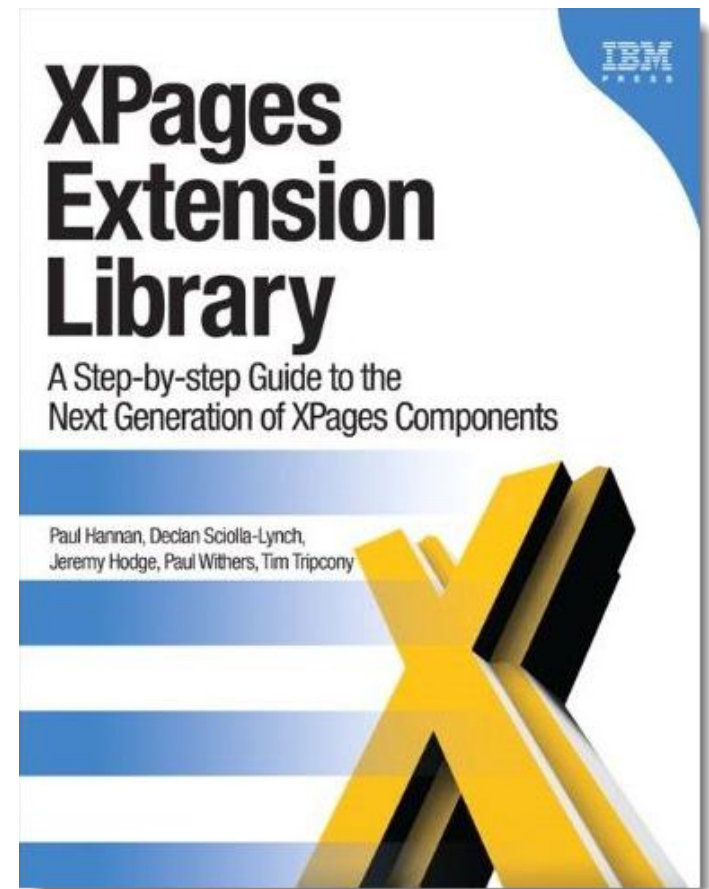
# Resources

- Making Domino Designer work like you want
  - <http://ntf.gbs.com/nathan/escape.nsf/d6plinks/NTFN-8GP6RP>
- NotesIn9 ( David Leedy )
  - <http://notesin9.com/>
- Xpages Development Forum
  - <http://www-10.lotus.com/ldd/xpagesforum.nsf>
- Xpages 101 ( Matt White )
  - <http://xpages101.net>
- OpenNTF
  - <http://openntf.org>
- Planet Lotus
  - <http://planetlotus.org>



## Books of Interest

- Publishing Date 19-May-2012
  - Declan Scolia-Lynch
  - Paul Hannan
  - Jeremy Hodges
  - Paul Withers
  - Tim Tripcony

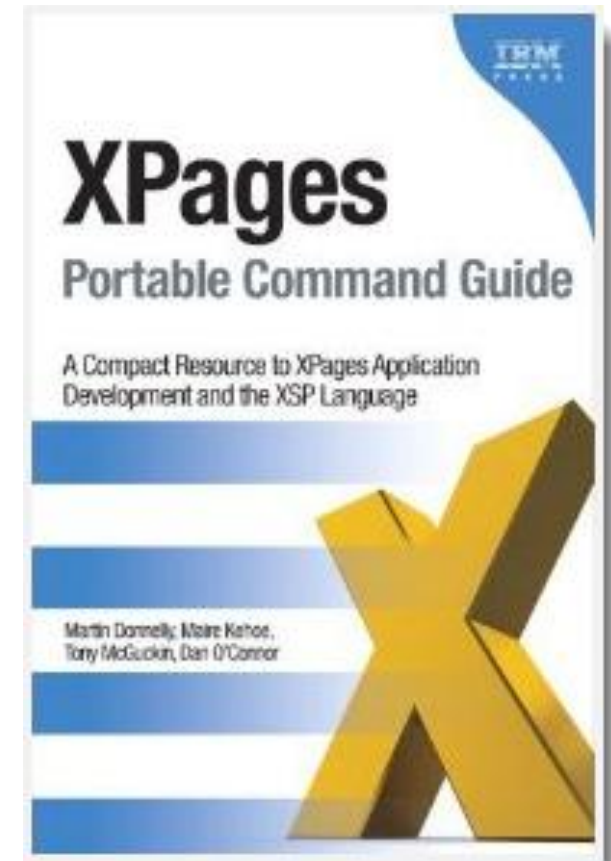


[http://www.amazon.com/XPages-Extension-Library-Step---Step/dp/0132901811/ref=sr\\_1\\_1?ie=UTF8&qid=1329839291&sr=8-1](http://www.amazon.com/XPages-Extension-Library-Step---Step/dp/0132901811/ref=sr_1_1?ie=UTF8&qid=1329839291&sr=8-1)



## Books of Interest

- Publishing Date 15-Feb-2012
  - *Martin Donnelly*
  - *Maire Kehoe*
  - *Tony McGuckin*
  - *Dan O'Connor*
- *XPages Portable Command Guide* offers fast access to **working code**, **tested solutions**, **expert tips**, and example-driven **best practices**



[http://www.amazon.com/XPages-Portable-Command-Guide-Application/dp/0132943050/ref=sr\\_1\\_1?s=books&ie=UTF8&qid=1329839422&sr=1-1](http://www.amazon.com/XPages-Portable-Command-Guide-Application/dp/0132943050/ref=sr_1_1?s=books&ie=UTF8&qid=1329839422&sr=1-1)



## Q & A

- Mail: [eknori@eknori.de](mailto:eknori@eknori.de)
- Blog: <http://www.eknori.de>
- Sametime: [bleedyellow.com](http://bleedyellow.com)
- Twitter: [eknori](https://twitter.com/eknori)







# FILL IN YOUR SESSION EVALUATIONS\*



\* or a kitten must die!